



2,308 Sq. Ft.

2 Stories

4 Bed

2.5 Bath

Primary Bed: Down

## About Fontana

Named after the beautiful Fontana lake in Western North Carolina, this home plan includes 4 bedrooms with walk-in closets, a first-floor primary suite and a spacious loft and sitting area on the second floor.

- Kitchen with island and pantry cabinet; Gourmet kitchen appliance layout option
- Great room with optional gas log fireplace and access to optional covered porch or patio.
- First-floor primary suite with optional tray ceiling, dual sinks, private water closet, walk-in closet, optional center drawer stack in vanity, optional door from Primary suite to porch, and 3 tub/shower layout options

...Read More Online



Elevation C



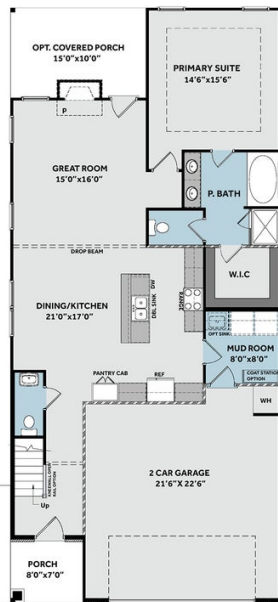
Elevation K

## THE FONTANA

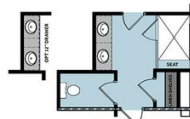
CC2308

### FIRST FLOOR

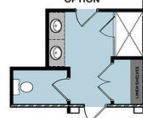
OPTIONAL TWIN WINDOW



OPTIONAL 2/8 IS LITE



PRIMARY BATH LAYOUT 2  
OPTION



PRIMARY BATH LAYOUT 1  
OPTION

OPTIONAL MUD ROOM RN WINDOW

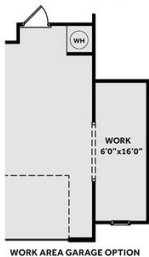
OPTIONAL 1/8 STEEL DOOR

### SECOND FLOOR

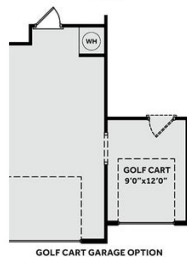


OPTIONAL WINDOW

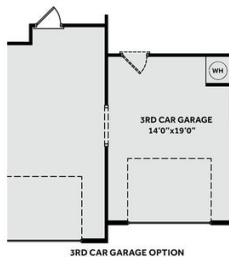
OPTIONAL TWIN TRANSOM



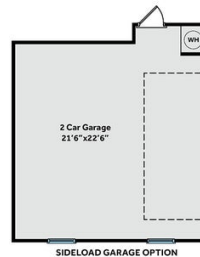
WORK AREA GARAGE OPTION



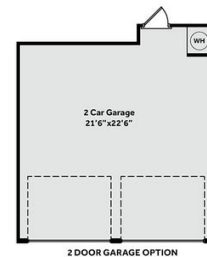
GOLF CART GARAGE OPTION



3RD CAR GARAGE OPTION



SIDELOAD GARAGE OPTION



2 DOOR GARAGE OPTION