



298 E Clydes Point Way
Wendell, NC 27591

MAGGIE WAY - DRAYTON

CONTACT OUR NEW HOME SPECIALISTS

MAGGIE & JESSICA

Call Us @ 910-405-8311

info@cavinessandcates.com



Priced

\$471,500

Elevation F

2,325 Sq Ft

2.0 Story

4 Beds

2.5 Baths

3 Car Garage

Primary Bedroom: Up

About 298 E Clydes Point Way

- Flex room off foyer with french doors, tray ceiling and crown molding.
- Crown molding through first floor.
- Kitchen with island is open to breakfast area and great room, quartz countertops in "Elegance", subway tile backsplash in "Arctic White" set in a brick pattern, white shaker cabinets with island cabinets painted in "Chestnut", and corner pantry; Stainless steel microwave, dishwasher, and smooth top range.
- Covered porch with grill patio makes for the perfect outdoor space and is easily accessible through

...Read More Online

About The Community.

Classic and understated style, coupled with an ideal location and approachable affordability lead you home to Maggie Way! Cool off by the future pool or cast a line into the five-acre lake. Your community will also offer a spacious "Tot Lot" where kids of all ages will have room to roam and scale the brand-new playground.

Located in the peaceful rural community of Archer Lodge, Maggie Way might feel like a serene country escape, but it's actually only a few short minutes from the big city opportunities of Raleigh. For those who want the best of both worlds, who want big city life without being overwhelmed by it, who still love the scent of clean air and the sight of unsullied blue skies, and who want to work, play, and live their best

...Read More Online

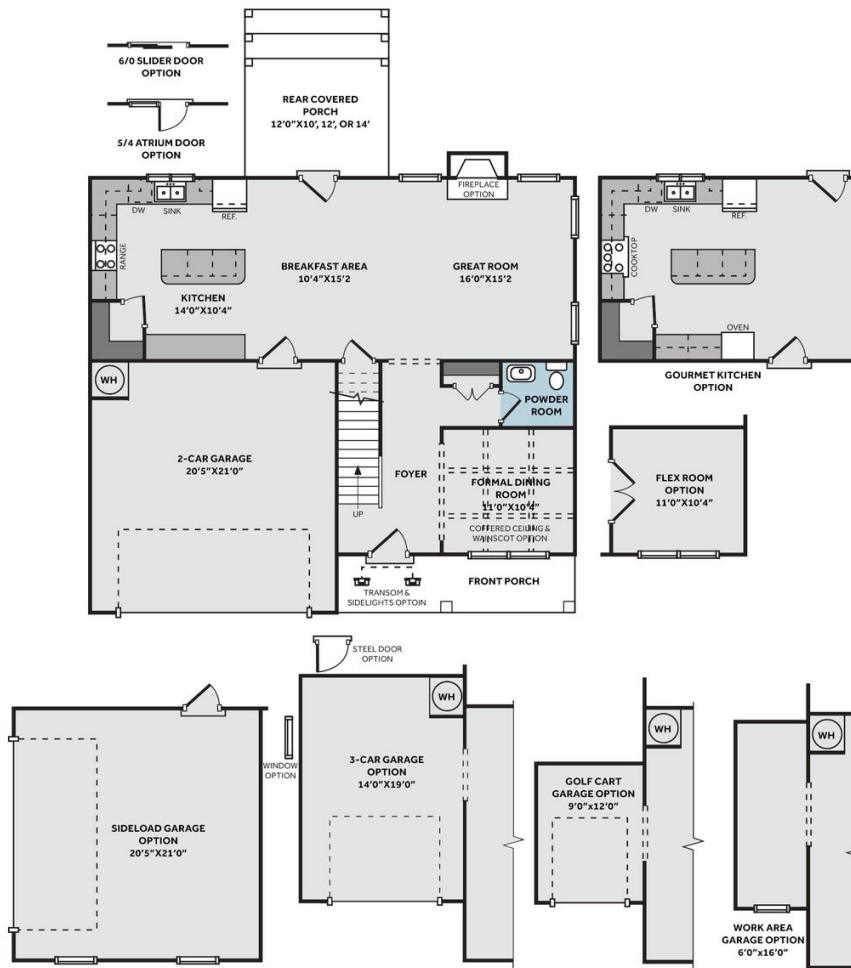
Prices, plans, dimensions, features, specifications, materials, and availability of homes or communities are subject to change without notice or obligation. Illustrations are artists depictions only and may differ from completed improvements. All prices subject to change without notice. Please contact your sales associate before writing an offer.



THE DRAYTON

CC2325

FIRST FLOOR



SECOND FLOOR

