



1,866 Sq. Ft.

4 Bed

2.0 Bath

1 Stories

2 Garage

Primary Bed: Down

About Avery

The Avery floorplan offers the ease of ranch-style living with smart features that fit today's lifestyle. The welcoming foyer opens to two bedrooms and a full hall bath, creating a comfortable space for family or guests. Also off the foyer, a dedicated mudroom with washer/dryer connections provides direct access to the garage, adding everyday convenience.

Beyond the entry, the home opens into a spacious great room with the option for a cozy corner fireplace. The kitchen is both stylish and functional, featuring a central island with a sink, a pantry, and an open layout that flows seamlessly into the dining area. From the dining area, enjoy views of the backyard with the option to extend your living outdoors to a rear porch or patio.

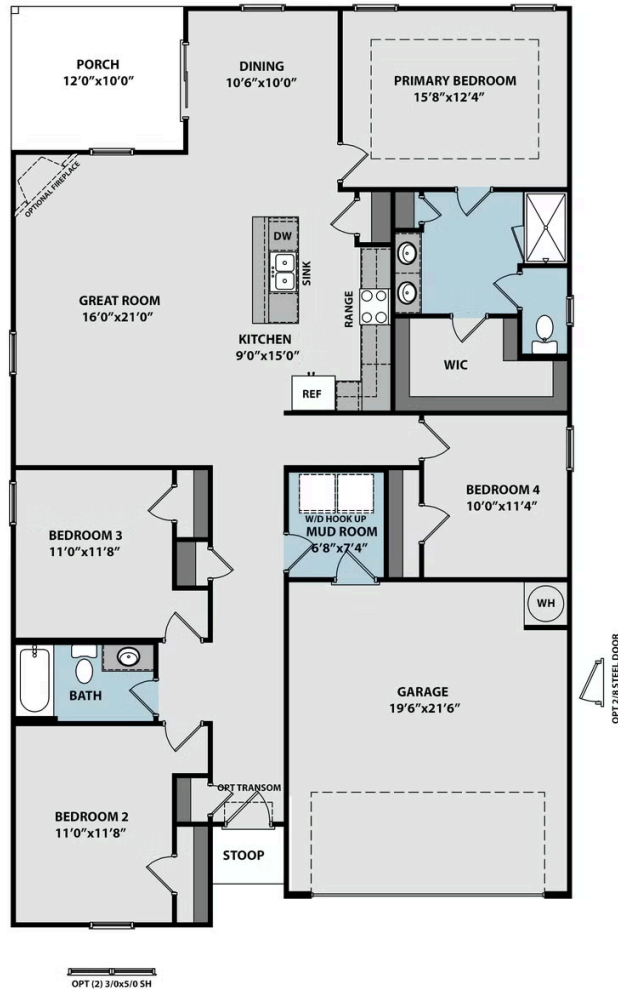
[...Read More Online](#)



Elevation A



Elevation F



MAIN LEVEL