



3,107 Sq. Ft.

5 Bed

3.0 Bath

1.5 Stories

2 Garage

Primary Bed: Down

About Bladen

- Formal dining room with coffered ceiling and wainscoting detail option
- Formal flex room with optional french door entry
- Great room with optional corner gas log fireplace
- Kitchen open to great room with breakfast area and island; Gourmet appliance layout option
- Optional covered porch or patio with 3 door options
- Primary Suite on the first floor with third window option for added natural lighting, optional tray ceiling, walk-in closet, dual sinks and 3 tub/shower layout options

...Read More Online



Elevation FH



Elevation B

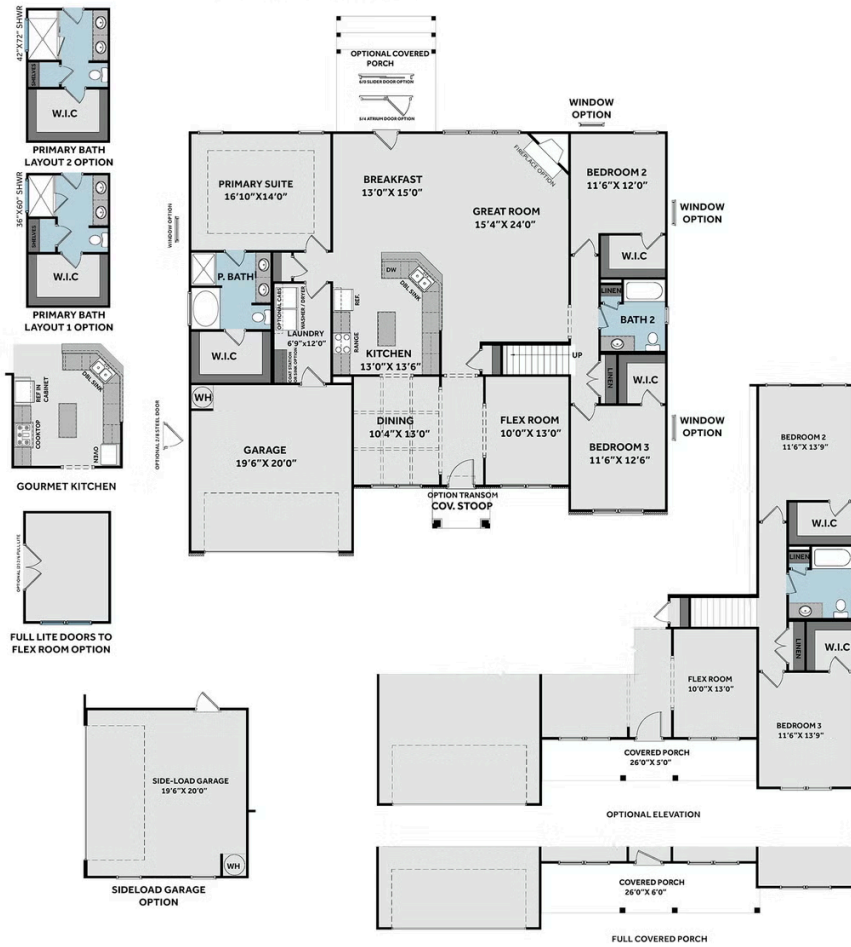


Elevation C

THE BLADEN

CC3107

FIRST FLOOR



SECOND FLOOR

