



3,579 Sq. Ft.

5 Bed

4.5 Bath

2 Stories

2 Garage

Primary Bed: Up

About Clemson

This home features an in-law suite on the first floor that features a private living space with sink and space for under-counter refrigerator! Bedroom with access to walk-in closet and full bathroom!

- Great room with fireplace and optional built-ins.
- Kitchen with island and pantry cabinets.
- Breakfast area
- Optional covered porch
- Formal dining room

...Read More Online



Elevation B



Elevation C



Elevation TW

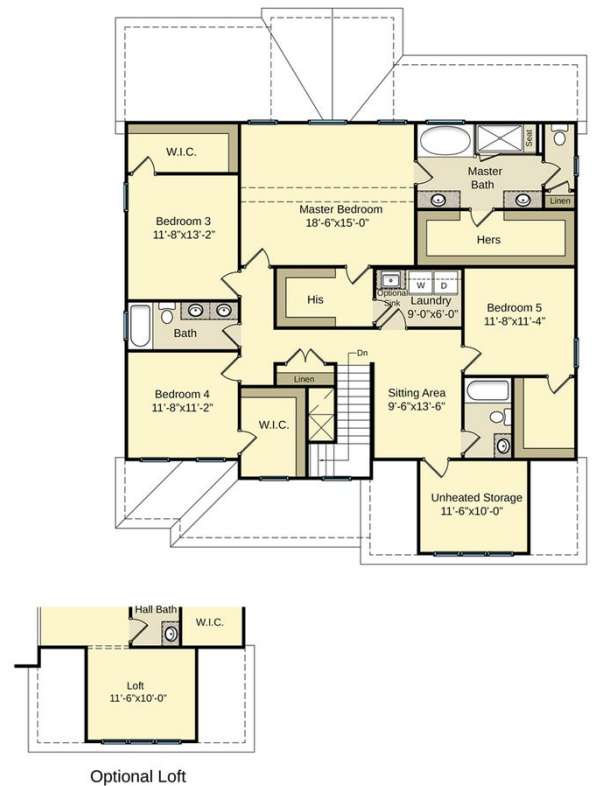
Prices, plans, dimensions, features, specifications, materials, and availability of homes or communities are subject to change without notice or obligation. Illustrations are artists depictions only and may differ from completed improvements. All prices subject to change without notice. Please contact your sales associate before writing an offer.

The Clemson CC3579

FIRST FLOOR



SECOND FLOOR



Prices, plans, dimensions, features, specifications, materials, and availability of homes or communities are subject to change without notice or obligation. Illustrations are artists depictions only and may differ from completed improvements. All prices subject to change without notice. Please contact your sales associate before writing an offer.