



143 Rough Ridge Trail
Aberdeen, NC 28315

BETHESDA PINES - AUSTIN

CONTACT OUR NEW HOME SPECIALISTS

MAGGIE & JESSICA

Call Us @ 910-405-8311

info@cavinessandcates.com



Priced

\$449,900

2,574 Sq Ft

2.0 Story

4 Beds

2.5 Baths

2 Car Garage

Primary Bedroom: Up

About 143 Rough Ridge Trail

- The first-floor home office features French doors, a closet, and direct access to the hallway bathroom, which includes a pedestal sink and an oval mirror. This bathroom is accessible from both the hallway and the office, adding extra convenience.
- The open-concept great room includes a floating mantel stained in "Grey Chestnut" above a gas log fireplace, with easy access to the rear covered porch.
- The kitchen, seamlessly connected to the great room, showcases a spacious island, a dining area, quartz countertops in "New Willow White," white shaker cabinets, and a subway tile backsplash in

...Read More Online

About The Community.

Prime Location • Dog Park • Playground • Sidewalks • Walking Trail

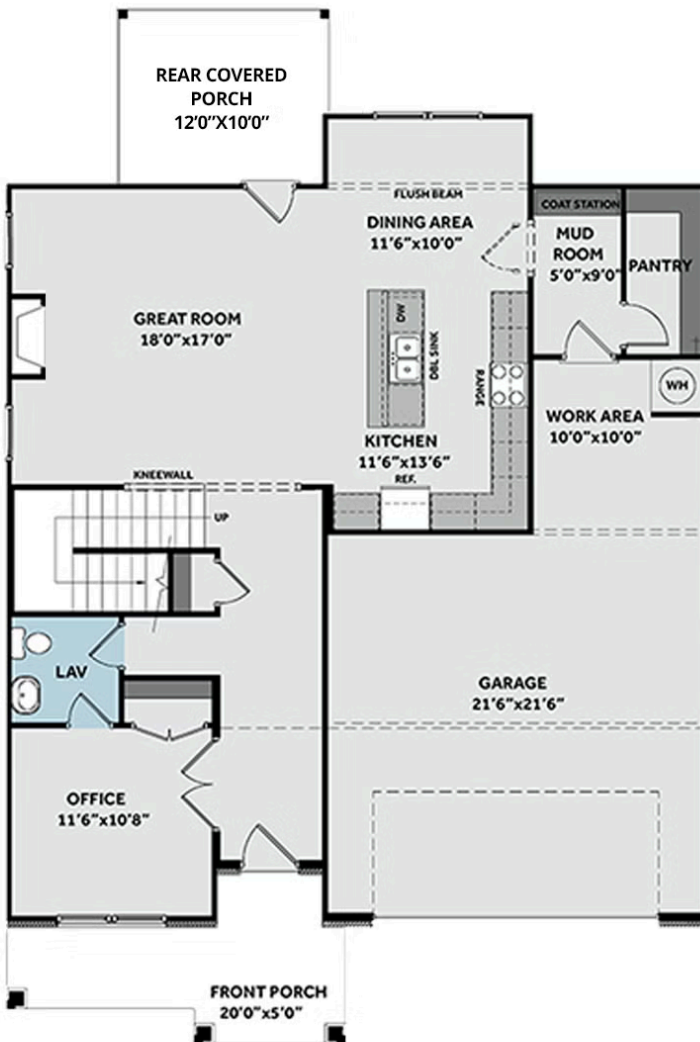
Bethesda Pines brings you a new place to call home in the heart of "the Pines" in Aberdeen, NC. Enjoy strolling along the neighborhood's sidewalks and walking trails, a new dog park for the pups, and if you have kids, they will be sure to have a blast at the tot lot! Located within walking distance to the popular Malcolm Blue Farm, home of local festivals and gatherings, and a short drive to downtown Aberdeen boasting charming locally owned shops and restaurants, you'll find everything you need conveniently close by!

...Read More Online

Prices, plans, dimensions, features, specifications, materials, and availability of homes or communities are subject to change without notice or obligation. Illustrations are artists depictions only and may differ from completed improvements. All prices subject to change without notice. Please contact your sales associate before writing an offer.



FIRST FLOOR



SECOND FLOOR

