



189 Rough Ridge Trail
Aberdeen, NC 28315

BETHESDA PINES - MAGNOLIA

CONTACT OUR NEW HOME SPECIALISTS

MAGGIE & JESSICA

Call Us @ 910-405-8311

info@cavinessandcates.com



Priced

\$450,000

2,642 Sq Ft

2.0 Story

4 Beds

2.5 Baths

2 Car Garage

Primary Bedroom: Up

About 189 Rough Ridge Trail

- Flex room with full-lite french doors off of the foyer.
- Open Great Room features corner gas log fireplace with decorative mantle and granite surround in "Absolute Black; Covered porch is easily accessible through sliding glass door in the great room.
- Kitchen with island and breakfast area, quartz countertops in "Elegance", subway tile backsplash in "Desert Gray" set in a herringbone pattern, white shaker cabinets with island cabinets painted in "Dovetail", sink with views to the backyard, and corner pantry; Stainless steel microwave, dishwasher, and gas range.

...Read More Online

About The Community.

Bethesda Pines brings you a new place to call home in the heart of "the Pines" in Aberdeen, NC. Enjoy strolling along the neighborhood's sidewalks and walking trails, and if you have kids, they will be sure to have a blast at the tot lot! Located within walking distance to the popular Malcolm Blue Farm, home of local festivals and gatherings, and a short drive to downtown Aberdeen boasting charming locally owned shops and restaurants, you'll find everything you need conveniently close by!

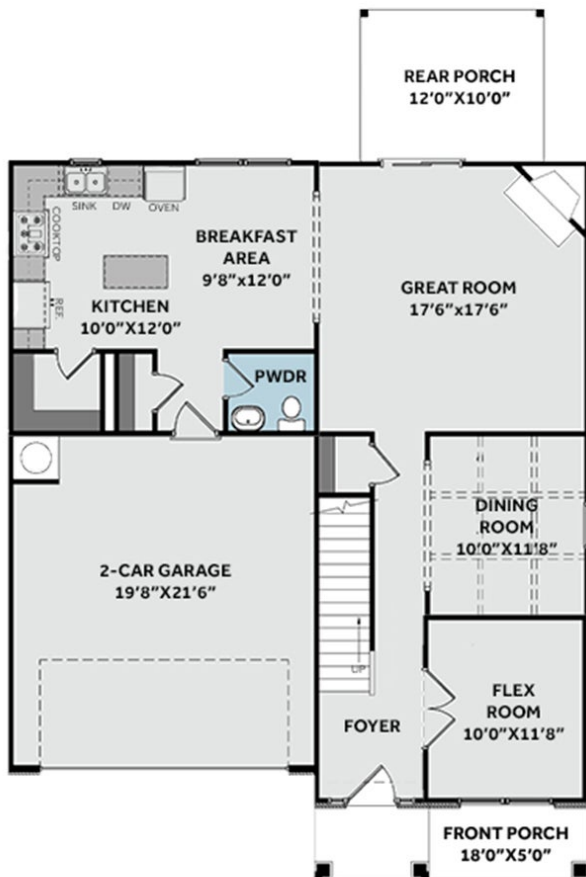
For military families, Bethesda Pines is just over 30 minutes from the Longstreet ACP at Fort Liberty.

...Read More Online

Prices, plans, dimensions, features, specifications, materials, and availability of homes or communities are subject to change without notice or obligation. Illustrations are artists depictions only and may differ from completed improvements. All prices subject to change without notice. Please contact your sales associate before writing an offer.



FIRST FLOOR



SECOND FLOOR

