



201 Rough Ridge Trail  
Aberdeen, NC 28315

**BETHESDA PINES - CLAYTON**

CONTACT OUR NEW HOME SPECIALISTS

**MAGGIE & JESSICA**

Call Us @ 910-405-8311

info@cavinessandcates.com



**Priced**

**\$443,900**

2,560 Sq Ft

2.0 Story

4 Beds

3.5 Baths

2 Car Garage

Primary Bedroom: Down

## About 201 Rough Ridge Trail

- Great room featuring a gas log fireplace with a floating mantle stained in "Grey Chestnut," and convenient access to the rear covered porch.
- Flex room off of foyer with french door entry.
- Primary suite on the first floor with tray ceiling and crown molding; Primary bath with dual sinks and quartz countertop in "Niagara", shaker cabinets in "Dusk" with center drawer stack, tile shower, linen closet, private water closet, tile flooring, and access to walk-in closet.
- Open kitchen showcases island with sink overlooking the great room, breakfast area, quartz

...Read More Online

## About The Community.

**Prime Location • Dog Park • Playground • Sidewalks • Walking Trail**

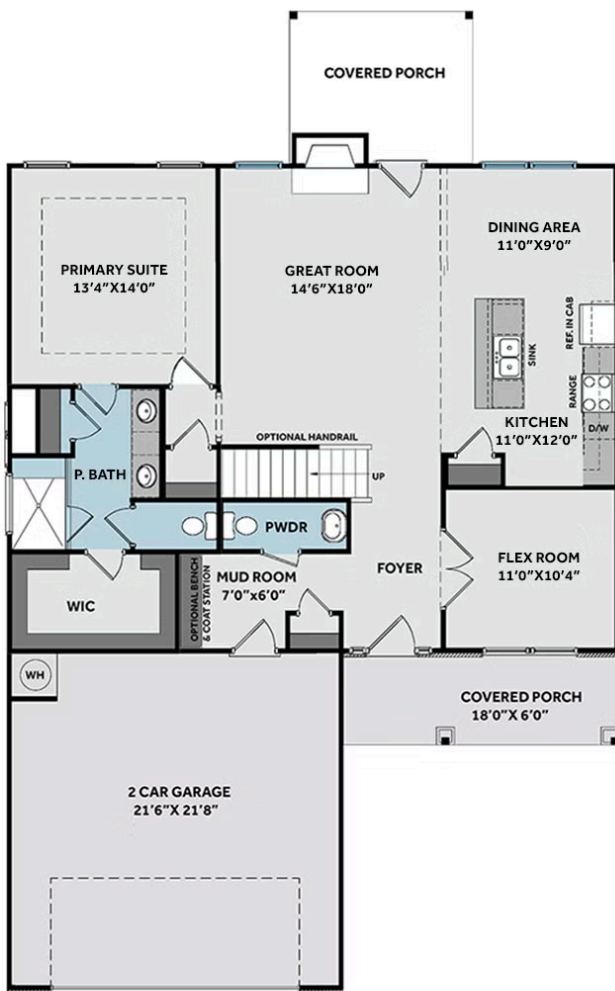
Bethesda Pines brings you a new place to call home in the heart of "the Pines" in Aberdeen, NC. Enjoy strolling along the neighborhood's sidewalks and walking trails, a new dog park for the pups, and if you have kids, they will be sure to have a blast at the tot lot! Located within walking distance to the popular Malcolm Blue Farm, home of local festivals and gatherings, and a short drive to downtown Aberdeen boasting charming locally owned shops and restaurants, you'll find everything you need conveniently close by!

...Read More Online

Prices, plans, dimensions, features, specifications, materials, and availability of homes or communities are subject to change without notice or obligation. Illustrations are artists depictions only and may differ from completed improvements. All prices subject to change without notice. Please contact your sales associate before writing an offer.



## FIRST FLOOR



## SECOND FLOOR

