



225 Rough Ridge Trail
Aberdeen, NC 28315

BETHESDA PINES - CLAYTON

CONTACT OUR NEW HOME SPECIALISTS

MAGGIE & JESSICA

Call Us @ 910-405-8311

info@cavinessandcates.com



Priced

\$451,900

2,560 Sq Ft

2.0 Story

4 Beds

3.5 Baths

2 Car Garage

Primary Bedroom: Down

About 225 Rough Ridge Trail

- First-floor primary suite features a tray ceiling with crown molding and a spacious en-suite bath with white dual sink vanity with center drawer stack and "Niagara" quartz countertop, private water closet, walk-in tile shower, linen closet, and spacious walk-in closet.
- The great room offers a gas log fireplace with a mantle and black granite surround, along with access to the rear covered porch.
- Flex room off the foyer.
- The kitchen opens to the great room and breakfast area, and includes an island with a sink,

...Read More Online

About The Community.

Prime Location • Dog Park • Playground • Sidewalks • Walking Trail

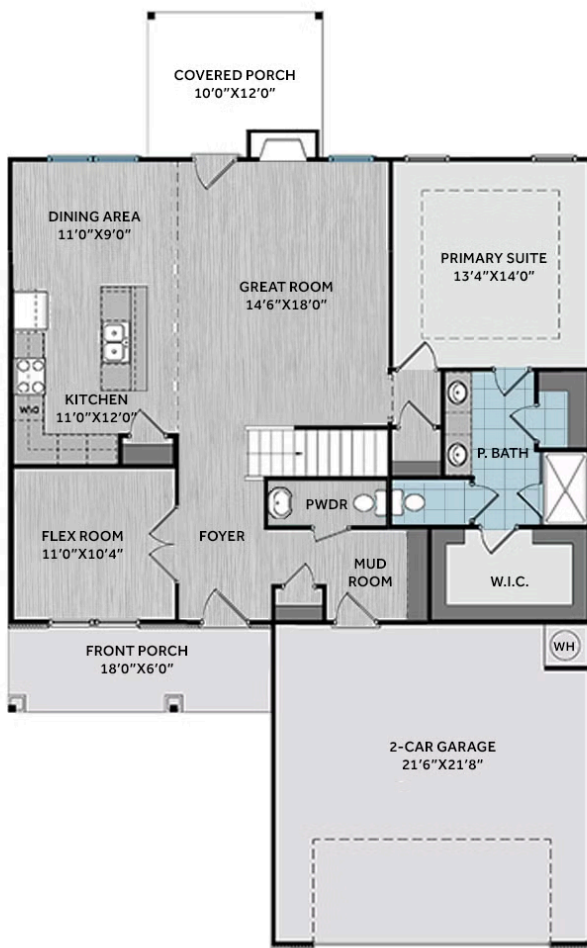
Bethesda Pines brings you a new place to call home in the heart of "the Pines" in Aberdeen, NC. Enjoy strolling along the neighborhood's sidewalks and walking trails, a new dog park for the pups, and if you have kids, they will be sure to have a blast at the tot lot! Located within walking distance to the popular Malcolm Blue Farm, home of local festivals and gatherings, and a short drive to downtown Aberdeen boasting charming locally owned shops and restaurants, you'll find everything you need conveniently close by!

...Read More Online

Prices, plans, dimensions, features, specifications, materials, and availability of homes or communities are subject to change without notice or obligation. Illustrations are artists depictions only and may differ from completed improvements. All prices subject to change without notice. Please contact your sales associate before writing an offer.



FIRST FLOOR



SECOND FLOOR

