



231 Rough Ridge Trail  
Aberdeen, NC 28315

**BETHESDA PINES - FONTANA**

CONTACT OUR NEW HOME SPECIALISTS

**MAGGIE & JESSICA**

Call Us @ 910-405-8311

info@cavinessandcates.com



**Priced**

**\$446,900**

2,308 Sq Ft

2.0 Story

4 Beds

2.5 Baths

2 Car Garage

Primary Bedroom: Down

## About 231 Rough Ridge Trail

- This home features a kitchen with an island, "Trigato" quartz countertops, white shaker cabinets, white herringbone subway tile backsplash, a pantry cabinet, and stainless steel appliances including a microwave, dishwasher, and gas range.
- The open great room offers a gas log fireplace with black granite surround and access to the rear-covered porch—perfect for outdoor dining or relaxing.
- The first-floor primary suite boasts a tray ceiling with crown molding and an en-suite bath with a dual sink vanity with a center drawer stack, "Simply White" quartz countertops, walk-in tile shower,

...Read More Online

## About The Community.

**Prime Location • Dog Park • Playground • Sidewalks • Walking Trail**

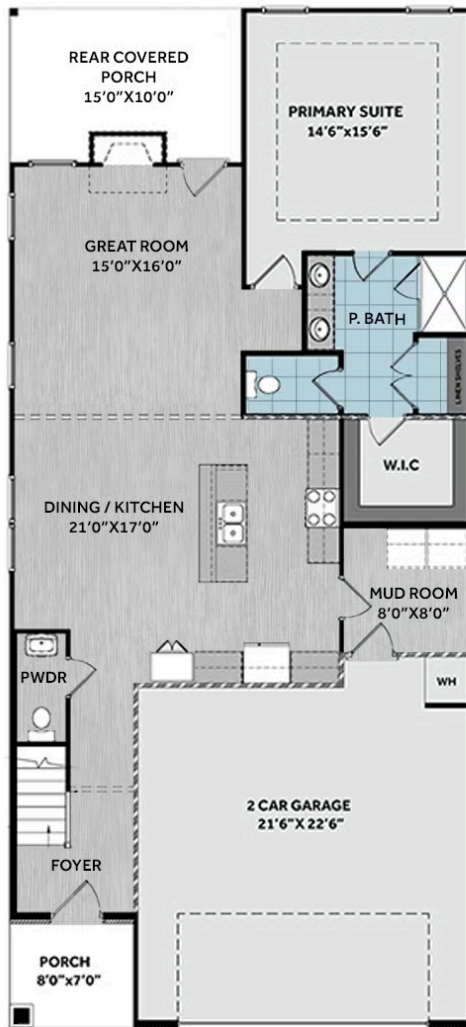
Bethesda Pines brings you a new place to call home in the heart of "the Pines" in Aberdeen, NC. Enjoy strolling along the neighborhood's sidewalks and walking trails, a new dog park for the pups, and if you have kids, they will be sure to have a blast at the tot lot! Located within walking distance to the popular Malcolm Blue Farm, home of local festivals and gatherings, and a short drive to downtown Aberdeen boasting charming locally owned shops and restaurants, you'll find everything you need conveniently close by!

...Read More Online

Prices, plans, dimensions, features, specifications, materials, and availability of homes or communities are subject to change without notice or obligation. Illustrations are artists depictions only and may differ from completed improvements. All prices subject to change without notice. Please contact your sales associate before writing an offer.



## FIRST FLOOR



## SECOND FLOOR

