



255 Rough Ridge Trail  
Aberdeen, NC 28315

**BETHESDA PINES - AUSTIN**

CONTACT OUR NEW HOME SPECIALISTS

**MAGGIE & JESSICA**

Call Us @ 910-405-8311

info@cavinessandcates.com



**Priced**

**\$469,500**

2,574 Sq Ft

2.0 Story

4 Beds

2.5 Baths

2 Car Garage

Primary Bedroom: Up

## About 255 Rough Ridge Trail

- Off the foyer sits an office with French doors, a closet, and shared access to the half bath.
- The open-concept great room includes a gas log fireplace with a mantle and black granite surround and opens to a rear covered porch.
- The kitchen opens to the great room and boasts a large island, dining area, quartz countertops in "New Willow White," white shaker cabinets, subway tile backsplash, and stainless steel appliances, including a microwave, dishwasher, and gas range.
- Off the dining area, a mudroom with a walk-in pantry sits conveniently by the garage entry.

...Read More Online

## About The Community.

**Prime Location • Dog Park • Playground • Sidewalks • Walking Trail**

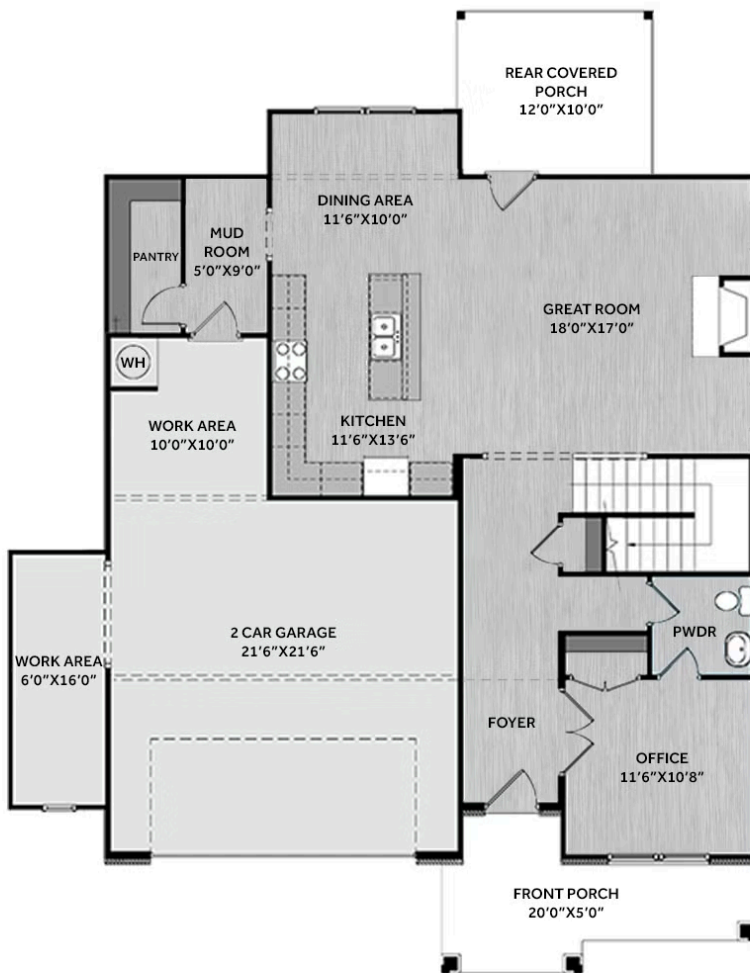
Bethesda Pines brings you a new place to call home in the heart of "the Pines" in Aberdeen, NC. Enjoy strolling along the neighborhood's sidewalks and walking trails, a new dog park for the pups, and if you have kids, they will be sure to have a blast at the tot lot! Located within walking distance to the popular Malcolm Blue Farm, home of local festivals and gatherings, and a short drive to downtown Aberdeen boasting charming locally owned shops and restaurants, you'll find everything you need conveniently close by!

...Read More Online

Prices, plans, dimensions, features, specifications, materials, and availability of homes or communities are subject to change without notice or obligation. Illustrations are artists depictions only and may differ from completed improvements. All prices subject to change without notice. Please contact your sales associate before writing an offer.



## FIRST FLOOR



## SECOND FLOOR

