



261 Rough Ridge Trail  
Aberdeen, NC 28315

**BETHESDA PINES - CLAYTON**

CONTACT OUR NEW HOME SPECIALISTS

**MAGGIE & JESSICA**

Call Us @ 910-405-8311

info@cavinessandcates.com



**Priced**

**\$465,944**

Elevation D

2,560 Sq Ft

2.0 Story

4 Beds

3.5 Baths

2 Car Garage

Primary Bedroom: Down

## About 261 Rough Ridge Trail

- The open-concept great room includes a gas log fireplace with black granite surround and flows into the kitchen and breakfast area with access to the rear covered porch.
- Off the foyer, a dining room painted in SW "Rare Gray" features two-piece crown molding and wainscoting, while opposite sits a mudroom with a coat closet, built-in bench and cubbies, half bath, and garage access.
- The kitchen overlooks the great room and boasts an island, "Trigato" quartz countertops, white shaker cabinets, white subway tile backsplash, pantry, and stainless steel appliances, including a

...Read More Online

## About The Community.

**Prime Location • Dog Park • Playground • Sidewalks • Walking Trail**

Bethesda Pines brings you a new place to call home in the heart of "the Pines" in Aberdeen, NC. Enjoy strolling along the neighborhood's sidewalks and walking trails, a new dog park for the pups, and if you have kids, they will be sure to have a blast at the tot lot! Located within walking distance to the popular Malcolm Blue Farm, home of local festivals and gatherings, and a short drive to downtown Aberdeen boasting charming locally owned shops and restaurants, you'll find everything you need conveniently close by!

...Read More Online

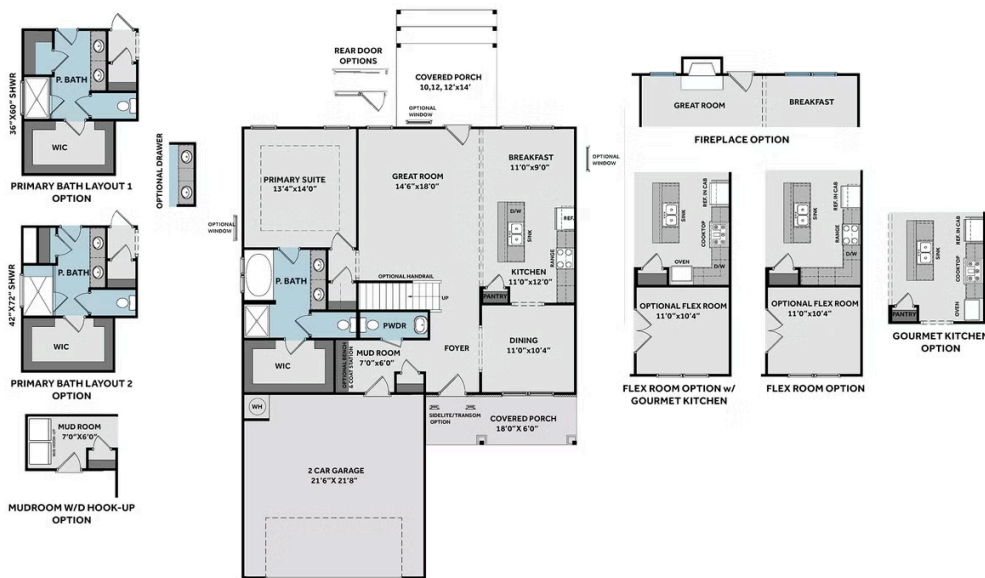
Prices, plans, dimensions, features, specifications, materials, and availability of homes or communities are subject to change without notice or obligation. Illustrations are artists depictions only and may differ from completed improvements. All prices subject to change without notice. Please contact your sales associate before writing an offer.



## THE CLAYTON

CC2560

### FIRST FLOOR



### SECOND FLOOR

