



298 Rough Ridge Trail
Aberdeen, NC 28315

BETHESDA PINES - CAMELLIA

CONTACT OUR NEW HOME SPECIALISTS

MAGGIE & JESSICA

Call Us @ 910-405-8311

info@cavinessandcates.com



Priced

\$465,913

Elevation F - Artistic Rendering for
Representation Purposes Only

2,358 Sq Ft

2.0 Story

4 Beds

2.5 Baths

2 Car Garage

Primary Bedroom: Down

About 298 Rough Ridge Trail

- This home features a formal dining room off the foyer, painted in SW "Naval", with a coffered ceiling and wainscoting accents.
- A laundry room, with cabinetry and stacked washer/dryer hookups, sits near the garage entry, next to a convenient half-bath.
- The kitchen offers "New Willow White" quartz countertops, white shaker cabinets, ceramic tile backsplash, bar seating, a pantry, and stainless steel appliances.
- The open great room includes a gas log fireplace with a decorative mantel and black granite

...Read More Online

About The Community.

Prime Location • Dog Park • Playground • Sidewalks • Walking Trail

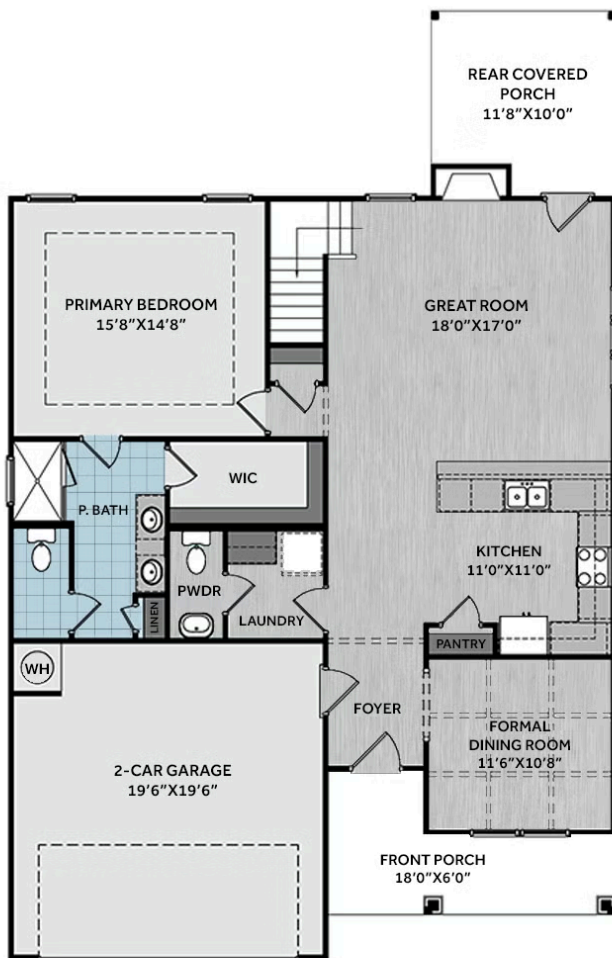
Bethesda Pines brings you a new place to call home in the heart of "the Pines" in Aberdeen, NC. Enjoy strolling along the neighborhood's sidewalks and walking trails, a new dog park for the pups, and if you have kids, they will be sure to have a blast at the tot lot! Located within walking distance to the popular Malcolm Blue Farm, home of local festivals and gatherings, and a short drive to downtown Aberdeen boasting charming locally owned shops and restaurants, you'll find everything you need conveniently close by!

...Read More Online

Prices, plans, dimensions, features, specifications, materials, and availability of homes or communities are subject to change without notice or obligation. Illustrations are artists depictions only and may differ from completed improvements. All prices subject to change without notice. Please contact your sales associate before writing an offer.



FIRST FLOOR



SECOND FLOOR

