



307 Glassmine Trail  
Aberdeen, NC 28315

**BETHESDA PINES - FONTANA**

CONTACT OUR NEW HOME SPECIALISTS

**MAGGIE & JESSICA**

Call Us @ 910-405-8311

info@cavinessandcates.com



**Priced**

**\$439,900**

2,308 Sq Ft

2.0 Story

4 Beds

2.5 Baths

2 Car Garage

Primary Bedroom: Down

## About 307 Glassmine Trail

- Kitchen with island and bar seating, white shaker cabinets, quartz countertops in "Carrera Retro", subway tile in "Desert Gray" set in a herringbone pattern, pantry cabinet; Stainless steel microwave, dishwasher, and gas range.
- Great room showcases a gas log fireplace with a decorative mantle and granite surround in "Absolute Black".
- Rear covered porch makes the perfect outdoor space and is easily accessible through the great room.

...Read More Online

## About The Community.

Bethesda Pines brings you a new place to call home in the heart of "the Pines" in Aberdeen, NC. Enjoy strolling along the neighborhood's sidewalks and walking trails, a new dog park for the pups, and if you have kids, they will be sure to have a blast at the tot lot! Located within walking distance to the popular Malcolm Blue Farm, home of local festivals and gatherings, and a short drive to downtown Aberdeen boasting charming locally owned shops and restaurants, you'll find everything you need conveniently close by!

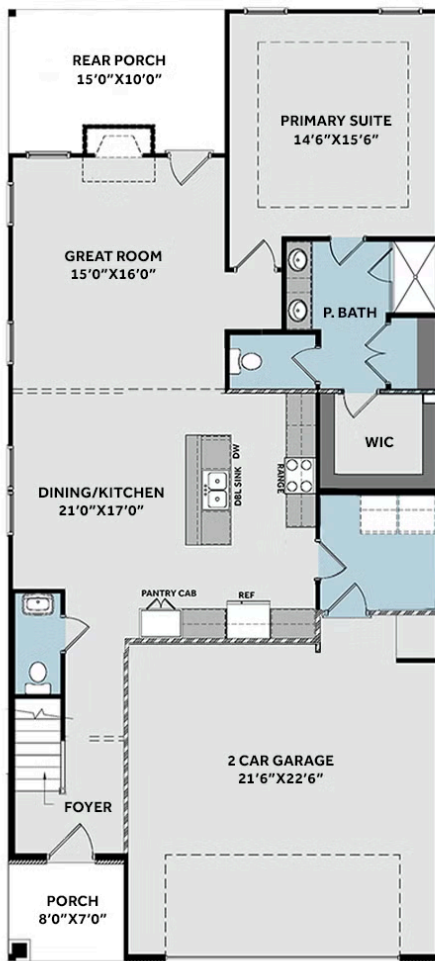
Community Open House! [www.cavinessandcates.com](http://www.cavinessandcates.com)

...Read More Online

Prices, plans, dimensions, features, specifications, materials, and availability of homes or communities are subject to change without notice or obligation. Illustrations are artists depictions only and may differ from completed improvements. All prices subject to change without notice. Please contact your sales associate before writing an offer.



## FIRST FLOOR



## SECOND FLOOR

