



312 Glassmine Trail
Aberdeen, NC 28315

BETHESDA PINES - GARLAND

CONTACT OUR NEW HOME SPECIALISTS

MAGGIE & JESSICA

Call Us @ 910-405-8311

info@cavinessandcates.com



Priced

\$419,900

2,090 Sq Ft

1.5 Story

4 Beds

2.0 Baths

2 Car Garage

Primary Bedroom: Down

About 312 Glassmine Trail

- Open concept great room with vaulted ceiling with faux wood beam and gas log fireplace with floating mantle stained in "Grey Chestnut".
- Kitchen with island and sink overlooking the great room, quartz countertops in "New Willow White", subway tile backsplash in "Desert Gray" set in a brick pattern, white shaker cabinets, and pantry; Stainless steel microwave, dishwasher, gas range.
- Dining area with access to rear covered porch.
- Primary suite with tray ceiling and crown molding; Primary bathroom with dual vanity with center

...Read More Online

About The Community.

Prime Location • Dog Park • Playground • Sidewalks • Walking Trail

Bethesda Pines brings you a new place to call home in the heart of "the Pines" in Aberdeen, NC. Enjoy strolling along the neighborhood's sidewalks and walking trails, a new dog park for the pups, and if you have kids, they will be sure to have a blast at the tot lot! Located within walking distance to the popular

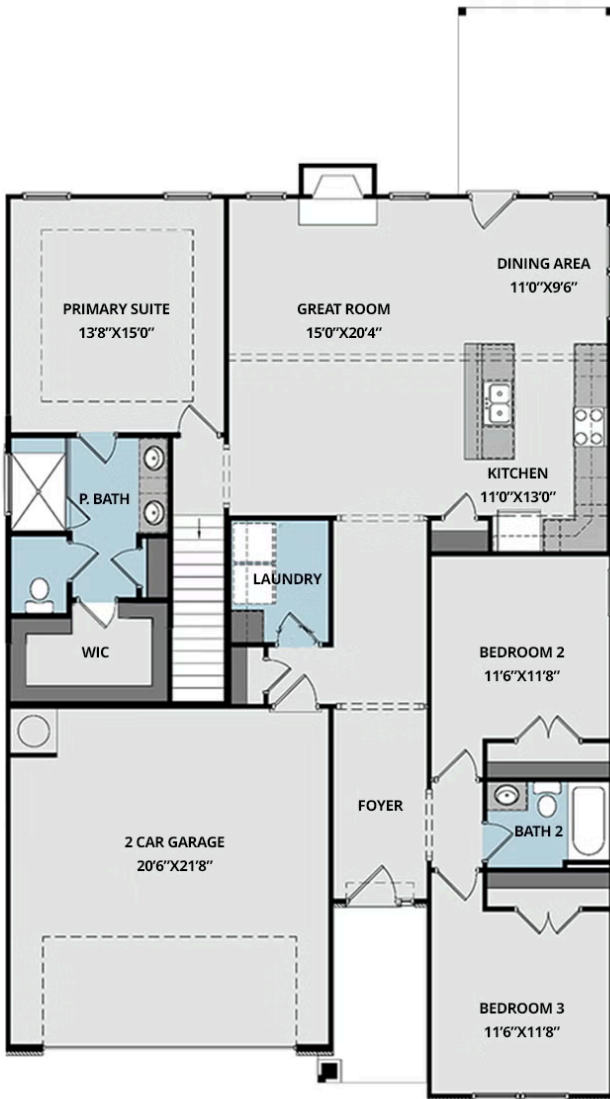


...Read More Online

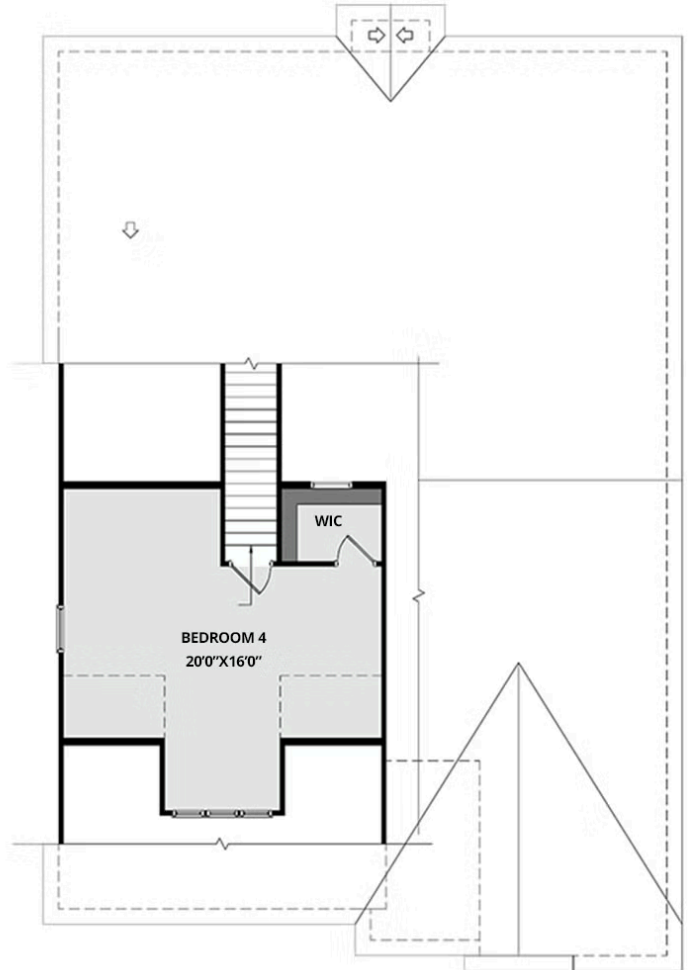
Prices, plans, dimensions, features, specifications, materials, and availability of homes or communities are subject to change without notice or obligation. Illustrations are artists depictions only and may differ from completed improvements. All prices subject to change without notice. Please contact your sales associate before writing an offer.



FIRST FLOOR



SECOND FLOOR



Prices, plans, dimensions, features, specifications, materials, and availability of homes or communities are subject to change without notice or obligation. Illustrations are artists depictions only and may differ from completed improvements. All prices subject to change without notice. Please contact your sales associate before writing an offer.