



344 Glassmine Trail  
Aberdeen, NC 28315

**BETHESDA PINES - PAMLICO**

CONTACT OUR NEW HOME SPECIALISTS

**MAGGIE & JESSICA**

Call Us @ 910-405-8311

info@cavinessandcates.com



**Priced**

**\$442,500**

2,522 Sq Ft

2.0 Story

5 Beds

3.0 Baths

2 Car Garage

Primary Bedroom: Up

## About 344 Glassmine Trail

- The formal dining room is off the foyer painted in Sherwin Williams "Homburg Grey" with coffered ceiling and craftsman style wainscoting detail.
- Open kitchen with island overlooking the great room, quartz countertops in "Elegance", natural stone mosaic backsplash, corner pantry, and breakfast area; Stainless steel microwave, dishwasher, and gas range.
- Great room with gas log fireplace with decorative mantle and granite surround in "Absolute Black" and rear porch access through sliding glass door.

[...Read More Online](#)

## About The Community.

**Prime Location • Dog Park • Playground • Sidewalks • Walking Trail**

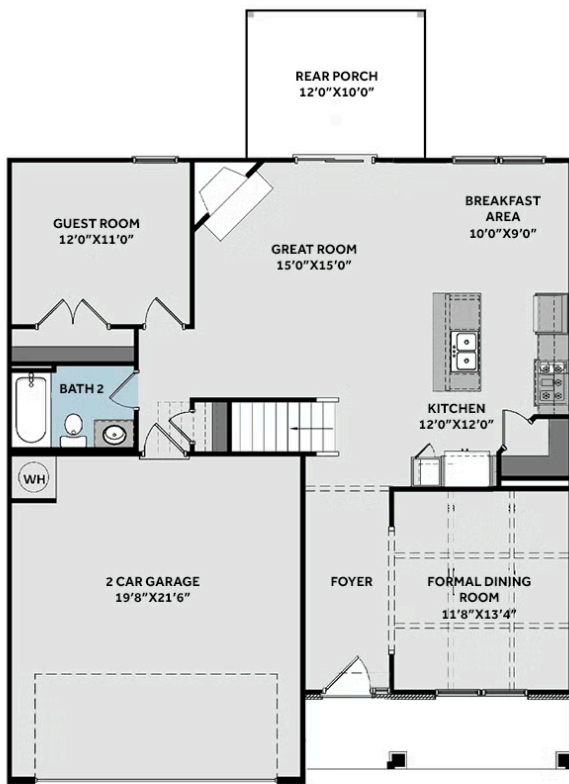
Bethesda Pines brings you a new place to call home in the heart of "the Pines" in Aberdeen, NC. Enjoy strolling along the neighborhood's sidewalks and walking trails, a new dog park for the pups, and if you have kids, they will be sure to have a blast at the tot lot! Located within walking distance to the popular Malcolm Blue Farm, home of local festivals and gatherings, and a short drive to downtown Aberdeen boasting charming locally owned shops and restaurants, you'll find everything you need conveniently close by!

[...Read More Online](#)

Prices, plans, dimensions, features, specifications, materials, and availability of homes or communities are subject to change without notice or obligation. Illustrations are artists depictions only and may differ from completed improvements. All prices subject to change without notice. Please contact your sales associate before writing an offer.



## FIRST FLOOR



## SECOND FLOOR

