



380 Glassmine Trail
Aberdeen, NC 28315

BETHESDA PINES - CAMELLIA

CONTACT OUR NEW HOME SPECIALISTS

MAGGIE & JESSICA

Call Us @ 910-405-8311

info@cavinessandcates.com



Priced

\$447,900

2,358 Sq Ft

2.0 Story

4 Beds

2.5 Baths

2 Car Garage

Primary Bedroom: Down

About 380 Glassmine Trail

- Upon entering the home, a formal dining room painted in Sherwin Williams "Gale Force" is located off the foyer with direct access to the kitchen.
- The entryway leads to a mudroom space that provides access to the garage and a convenient half-bath featuring a pedestal sink and oval mirror.
- The kitchen offers ample countertop space with quartz countertops in "New Willow White," a sink overlooking the great room, bar seating, white shaker cabinets, subway tile backsplash in "Arctic White" set in a brick pattern, a pantry, and stainless steel appliances including a microwave,

...Read More Online

About The Community.

Prime Location • Dog Park • Playground • Sidewalks • Walking Trail

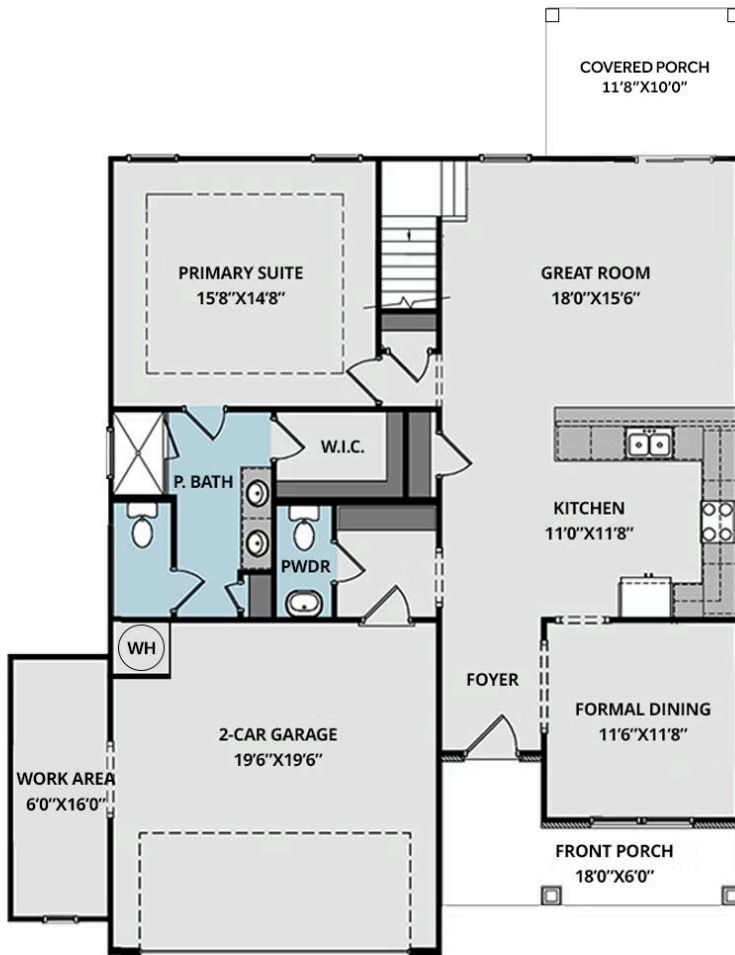
Bethesda Pines brings you a new place to call home in the heart of "the Pines" in Aberdeen, NC. Enjoy strolling along the neighborhood's sidewalks and walking trails, a new dog park for the pups, and if you have kids, they will be sure to have a blast at the tot lot! Located within walking distance to the popular Malcolm Blue Farm, home of local festivals and gatherings, and a short drive to downtown Aberdeen boasting charming locally owned shops and restaurants, you'll find everything you need conveniently close by!

...Read More Online

Prices, plans, dimensions, features, specifications, materials, and availability of homes or communities are subject to change without notice or obligation. Illustrations are artists depictions only and may differ from completed improvements. All prices subject to change without notice. Please contact your sales associate before writing an offer.



FIRST FLOOR



SECOND FLOOR

