



518 Grassy Gap Trail  
Aberdeen, NC 28315

**BETHESDA PINES - BAILEY**

CONTACT OUR NEW HOME SPECIALISTS

**MAGGIE & JESSICA**

Call Us @ 910-405-8311

info@cavinessandcates.com



**Priced**

**\$436,900**

2,424 Sq Ft

2.5 Story

4 Beds

2.5 Baths

2 Car Garage

Primary Bedroom: Up

## About 518 Grassy Gap Trail

- This open floorplan features a spacious great room with a gas log fireplace, mantle, and black granite surround.
- The kitchen features an island with a breakfast nook extension, quartz countertops in "New Willow White," white shaker cabinets, a white subway tile backsplash, pantry, dining area, and stainless steel appliances including a microwave, dishwasher, and gas range.
- Sliding doors off the dining area lead to a rear-covered porch—ideal for entertaining.
- A half-bath is located just off the foyer.

...Read More Online

## About The Community.

**Prime Location • Dog Park • Playground • Sidewalks • Walking Trail**

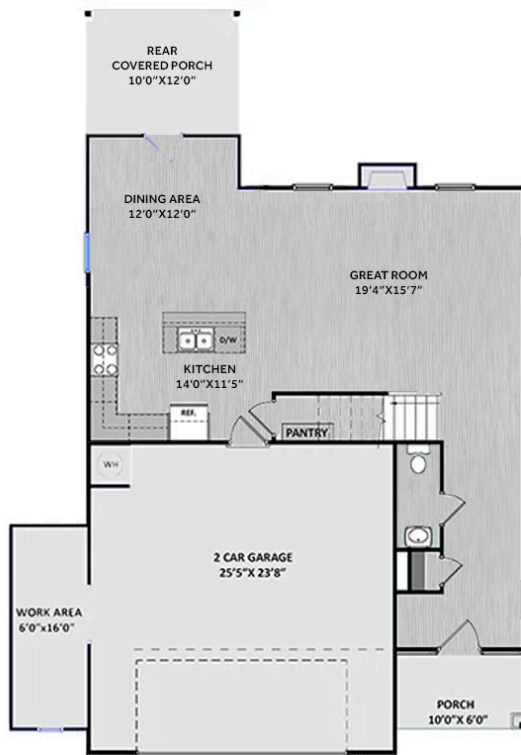
Bethesda Pines brings you a new place to call home in the heart of "the Pines" in Aberdeen, NC. Enjoy strolling along the neighborhood's sidewalks and walking trails, a new dog park for the pups, and if you have kids, they will be sure to have a blast at the tot lot! Located within walking distance to the popular Malcolm Blue Farm, home of local festivals and gatherings, and a short drive to downtown Aberdeen boasting charming locally owned shops and restaurants, you'll find everything you need conveniently close by!

...Read More Online

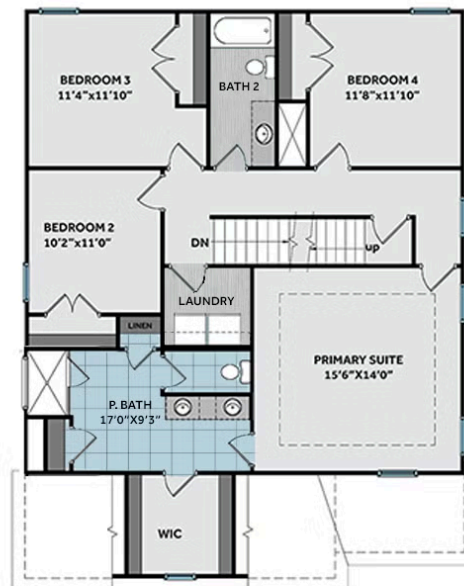
Prices, plans, dimensions, features, specifications, materials, and availability of homes or communities are subject to change without notice or obligation. Illustrations are artists depictions only and may differ from completed improvements. All prices subject to change without notice. Please contact your sales associate before writing an offer.



## FIRST FLOOR



## SECOND FLOOR



## THIRD FLOOR

