



700 Chestoa Trail
Aberdeen, NC 28315

BETHESDA PINES - GARLAND

CONTACT OUR NEW HOME SPECIALISTS

MAGGIE & JESSICA

Call Us @ 910-405-8311

info@cavinessandcates.com



Priced

\$432,800

2,090 Sq Ft

1.5 Story

4 Beds

3.0 Baths

2 Car Garage

Primary Bedroom: Down

About 700 Chestoa Trail

- The Garland home offers an inviting open-concept great room featuring a vaulted ceiling with a faux wood beam.
- The kitchen is thoughtfully designed with an island and sink overlooking the great room, quartz countertops in "New Willow White," a subway tile backsplash in "Arctic White" set in a herringbone pattern, white shaker cabinets, a pantry, and stainless steel appliances, including a microwave, dishwasher, and gas range.
- The adjacent dining area provides access to the rear covered porch, perfect for outdoor dining.

...Read More Online

About The Community.

Prime Location • Dog Park • Playground • Sidewalks • Walking Trail

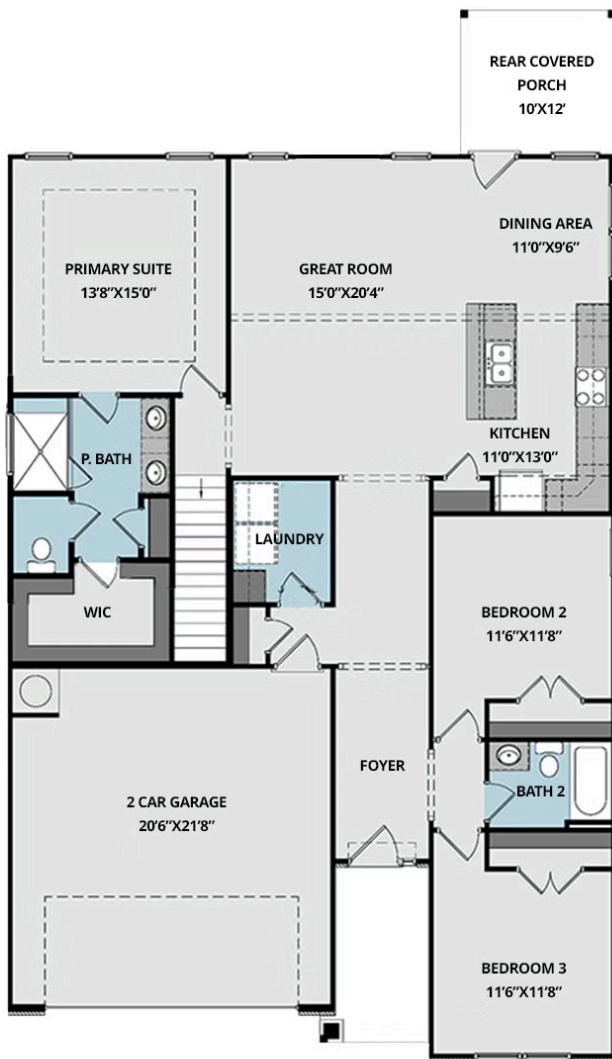
Bethesda Pines brings you a new place to call home in the heart of "the Pines" in Aberdeen, NC. Enjoy strolling along the neighborhood's sidewalks and walking trails, a new dog park for the pups, and if you have kids, they will be sure to have a blast at the tot lot! Located within walking distance to the popular Malcolm Blue Farm, home of local festivals and gatherings, and a short drive to downtown Aberdeen boasting charming locally owned shops and restaurants, you'll find everything you need conveniently close by!

...Read More Online

Prices, plans, dimensions, features, specifications, materials, and availability of homes or communities are subject to change without notice or obligation. Illustrations are artists depictions only and may differ from completed improvements. All prices subject to change without notice. Please contact your sales associate before writing an offer.



FIRST FLOOR



SECOND FLOOR

