



718 Chestoa Trail
Aberdeen, NC 28315

BETHESDA PINES - FONTANA

CONTACT OUR NEW HOME SPECIALISTS

MAGGIE & JESSICA

Call Us @ 910-405-8311

info@cavinessandcates.com



Priced

\$442,676

*privacy fence not pictured

2,308 Sq Ft

2.0 Story

4 Beds

2.5 Baths

2 Car Garage

Primary Bedroom: Down

About 718 Chestoa Trail

- Wooden privacy fence and covered porch in backyard!
- Kitchen with island and bar seating, white shaker cabinets, quartz countertops in "Trigato", subway tile in "Arctic White" set in a brick pattern, pantry cabinet; Stainless steel microwave, dishwasher, and gas range.
- Gas log fireplace with floating mantel stained in "Loft Pine" in great room.
- First-floor Primary Suite with tray ceiling, crown molding, walk-in closet, dual sinks with quartz countertop, stained "Espresso" cabinets with center drawer stack, private water closet, walk-in tile

...Read More Online

About The Community.

Prime Location • Dog Park • Playground • Sidewalks • Walking Trail

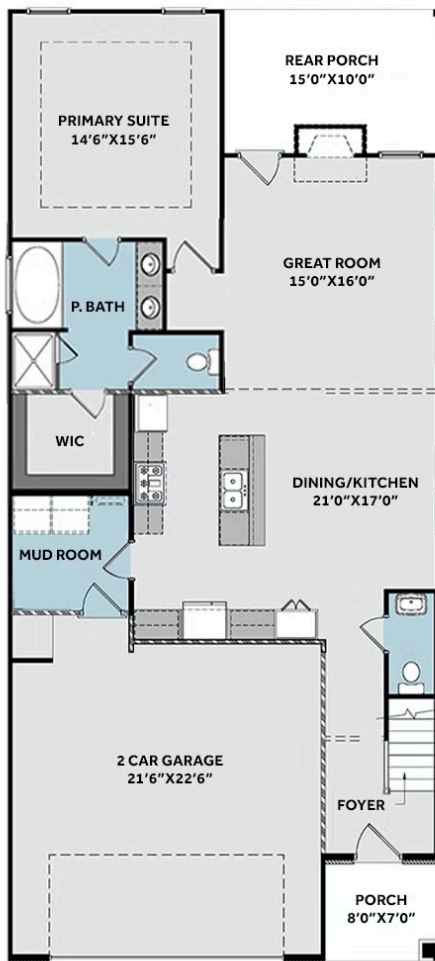
Bethesda Pines brings you a new place to call home in the heart of "the Pines" in Aberdeen, NC. Enjoy strolling along the neighborhood's sidewalks and walking trails, a new dog park for the pups, and if you have kids, they will be sure to have a blast at the tot lot! Located within walking distance to the popular Malcolm Blue Farm, home of local festivals and gatherings, and a short drive to downtown Aberdeen boasting charming locally owned shops and restaurants, you'll find everything you need conveniently close by!

...Read More Online

Prices, plans, dimensions, features, specifications, materials, and availability of homes or communities are subject to change without notice or obligation. Illustrations are artists depictions only and may differ from completed improvements. All prices subject to change without notice. Please contact your sales associate before writing an offer.



FIRST FLOOR



SECOND FLOOR

