



724 Chestoa Trail  
Aberdeen, NC 28315

**BETHESDA PINES - GARLAND**

CONTACT OUR NEW HOME SPECIALISTS

**MAGGIE & JESSICA**

Call Us @ 910-405-8311

info@cavinessandcates.com



**Priced**

**\$426,200**

2,090 Sq Ft

1.5 Story

4 Beds

3.0 Baths

2 Car Garage

Primary Bedroom: Down

## About 724 Chestoa Trail

- This home sits on a corner lot!
- Open concept great room with vaulted ceiling with faux wood beam detail and natural gas log fireplace with floating mantle stained in "Loft Pine".
- Kitchen with island and sink overlooking the great room, quartz countertops in "New Willow White", subway tile backsplash in "Desert Gray" set in a brick pattern, white shaker cabinets, and pantry; Stainless steel microwave, dishwasher, gas range.
- Dining area with access to rear covered porch.

...Read More Online

## About The Community.

**Prime Location • Dog Park • Playground • Sidewalks • Walking Trail**

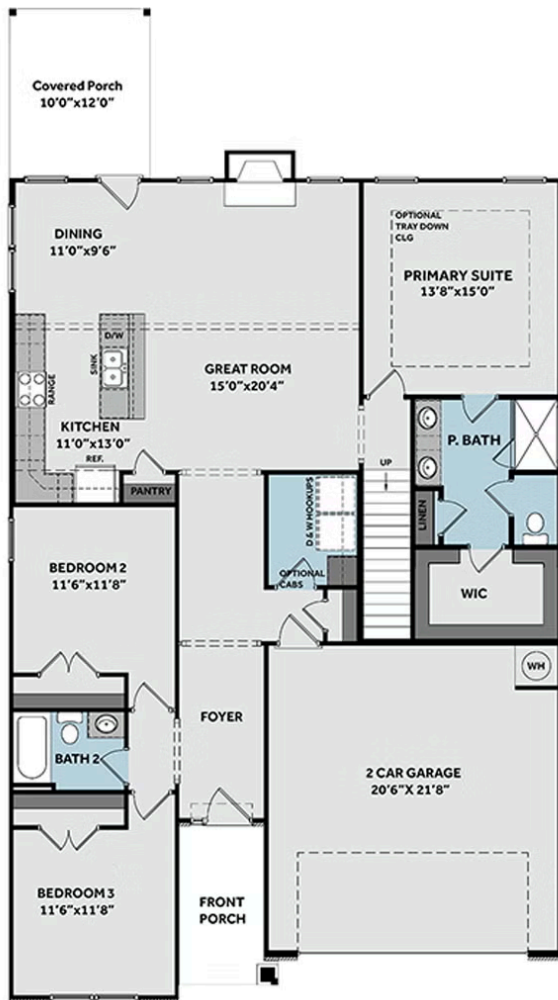
Bethesda Pines brings you a new place to call home in the heart of "the Pines" in Aberdeen, NC. Enjoy strolling along the neighborhood's sidewalks and walking trails, a new dog park for the pups, and if you have kids, they will be sure to have a blast at the tot lot! Located within walking distance to the popular Malcolm Blue Farm, home of local festivals and gatherings, and a short drive to downtown Aberdeen boasting charming locally owned shops and restaurants, you'll find everything you need conveniently close by!

...Read More Online

Prices, plans, dimensions, features, specifications, materials, and availability of homes or communities are subject to change without notice or obligation. Illustrations are artists depictions only and may differ from completed improvements. All prices subject to change without notice. Please contact your sales associate before writing an offer.



## FIRST FLOOR



## SECOND FLOOR

