



Harbour
MODEL HOME ADDRESS
223 Cline Way
Beaufort, NC 28516

CONTACT OUR NEW HOME SPECIALISTS

MAGGIE & JESSICA

Call Us @ 910-405-8311

info@cavinessandcates.com



1,984 Sq. Ft.

2 Stories

3 Bed

2.5 Bath

Primary Bed: Down

About Harbour

This open-concept townhome plan features plenty of both living and bedroom space in its 1,984 square feet!

- Upon entering the home, you are greeted with a foyer and powder room.
- The kitchen, open to the dining area and great room, features a spacious island with seating, plenty of countertop/cabinet space, and a walk-in corner pantry.
- A laundry closet with washer/dryer hookups is located off of the kitchen.
- The open dining area and great room have access to the rear covered porch.

...Read More Online



Colorway 1



Colorway 1



Colorway 2

Prices, plans, dimensions, features, specifications, materials, and availability of homes or communities are subject to change without notice or obligation. Illustrations are artists depictions only and may differ from completed improvements. All prices subject to change without notice. Please contact your sales associate before writing an offer.





Harbour
MODEL HOME ADDRESS
223 Cline Way
Beaufort, NC 28516

CONTACT OUR NEW HOME SPECIALISTS

MAGGIE & JESSICA

Call Us @ 910-405-8311

info@cavinessandcates.com

THE HARBOUR TH1984

FIRST FLOOR

SECOND FLOOR



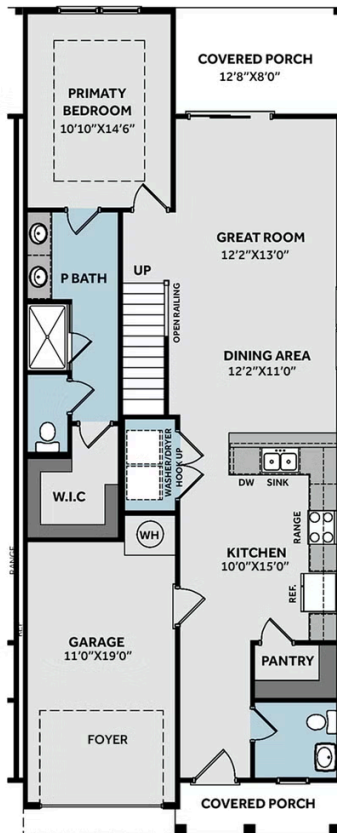
Prices, plans, dimensions, features, specifications, materials, and availability of homes or communities are subject to change without notice or obligation. Illustrations are artists depictions only and may differ from completed improvements. All prices subject to change without notice. Please contact your sales associate before writing an offer.



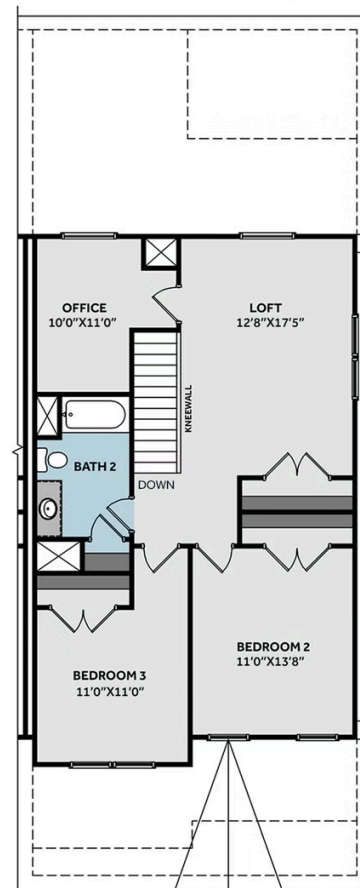
THE HARBOUR

TH1984 - RIGHT END UNIT

FIRST FLOOR



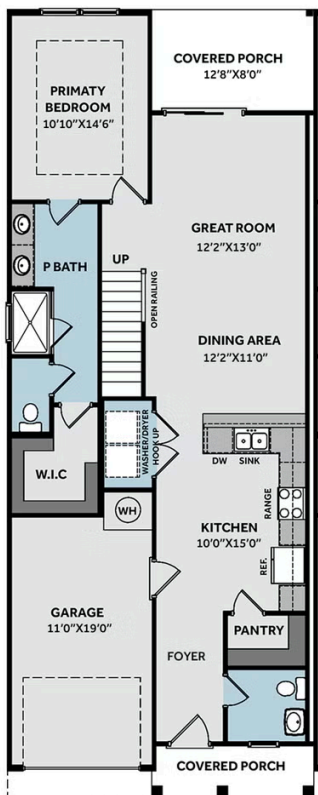
SECOND FLOOR



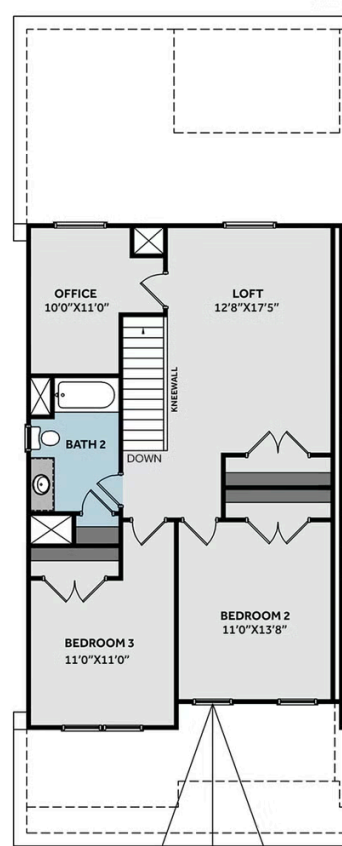
THE HARBOUR

TH1984 - LEFT END UNIT

FIRST FLOOR



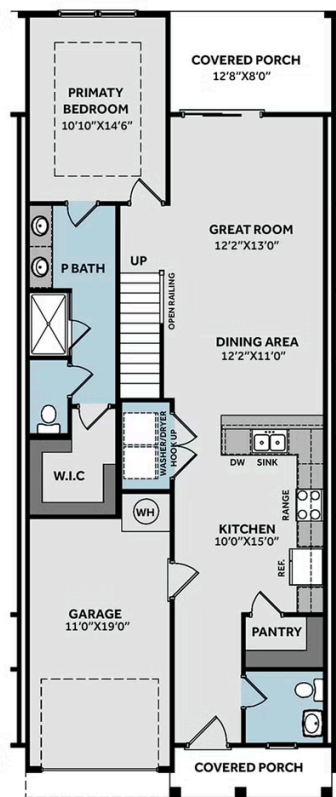
SECOND FLOOR



THE HARBOUR

TH1984 - MIDDLE UNIT

FIRST FLOOR



SECOND FLOOR

