



1169 Serotina Drive SE  
Bolivia, NC 28422  
**PALMETTO CREEK - SOUTHPORT**

CONTACT OUR NEW HOME SPECIALISTS  
**MAGGIE & JESSICA**  
Call Us @ 910-405-8311  
info@cavinessandcates.com



## Priced

# \$459,900

Elevation BF

1,912 Sq Ft

1.0 Story

3 Beds

2.0 Baths

2 Car Garage

Primary Bedroom: Down

## About 1169 Serotina Drive SE

Move into this home in 2022!

- First-floor Primary Suite with tray ceiling and crown molding, dual walk-in closets with wood shelving and sweater tower, zero entry tile shower, separate vanities with granite countertops in "Azul Platino", Seattle Snow shaker cabinets with center drawer stack, private water closet, and linen closet with wood shelving.
- Gourmet kitchen with sink overlooking the great room, granite countertops in "Azul Platino", "Arctic White" subway tile backsplash set in a herringbone pattern, Seattle Snow shaker cabinets, and

...Read More Online

## About The Community.

Palmetto Creek is a gated community located between Wilmington, North Carolina and Myrtle Beach, South Carolina in an area known as the Brunswick Islands. The Palmetto Creek community is lined with palmetto palms, small pocket lakes, and walking trails created for long walks and outside activities. It is the perfect place for that dream home on the coast or rewarding retirement home. Cradled by lush landscaping, this charming gated community offers low-maintenance living, giving you time to explore its many hidden treasures. Enjoy a laid-back lifestyle in the community as well as the local area. With the mild four-season climate, the low tax rate, and low cost of living, your story can only get better! What's on-site at Palmetto Creek will enrich your life's story as well. Amenities that rival the finest resorts

...Read More Online

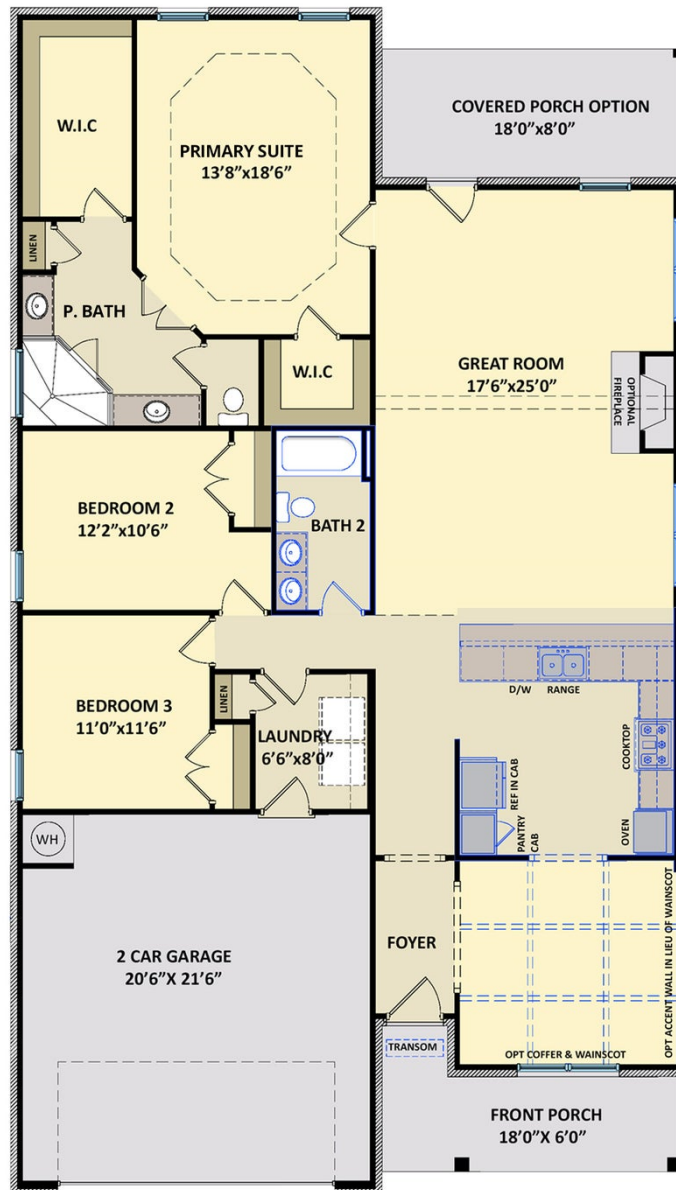
Prices, plans, dimensions, features, specifications, materials, and availability of homes or communities are subject to change without notice or obligation. Illustrations are artists depictions only and may differ from completed improvements. All prices subject to change without notice. Please contact your sales associate before writing an offer.





1169 Serotina Drive SE  
Bolivia, NC 28422  
PALMETTO CREEK - SOUTHPORT

CONTACT OUR NEW HOME SPECIALISTS  
**MAGGIE & JESSICA**  
Call Us @ 910-405-8311  
info@cavinessandcates.com



Prices, plans, dimensions, features, specifications, materials, and availability of homes or communities are subject to change without notice or obligation. Illustrations are artists depictions only and may differ from completed improvements. All prices subject to change without notice. Please contact your sales associate before writing an offer.

