



Priced

\$459,900

Full Brick Elevation

2,050 Sq Ft

1.5 Story

3 Beds

2.0 Baths

2 Car Garage

Primary Bedroom: Down

About 1173 Serotina Drive SE

- Great room with cathedral ceiling with faux beam detail, and gas log fireplace with decorative mantle and granite surround in "Absolute Black".
- Gourmet kitchen open to the dining area with views to the backyard, granite countertops in "Azul Platino", subway tile backsplash in "Desert Gray" set in a brick pattern, Settle "Snow" shaker cabinets, pantry, and island with kitchen sink overlooking the great room; Stainless steel microwave, dishwasher, double wall oven, and smooth cooktop.
- Covered porch is easily accessible through dining area.

...Read More Online

About The Community.

Palmetto Creek is a gated community located between Wilmington, North Carolina and Myrtle Beach, South Carolina in an area known as the Brunswick Islands. The Palmetto Creek community is lined with palmetto palms, small pocket lakes, and walking trails created for long walks and outside activities. It is the perfect place for that dream home on the coast or rewarding retirement home. Cradled by lush landscaping, this charming gated community offers low-maintenance living, giving you time to explore its many hidden treasures. Enjoy a laid-back lifestyle in the community as well as the local area. With the mild four-season climate, the low tax rate, and low cost of living, your story can only get better! What's on-site at Palmetto Creek will enrich your life's story as well. Amenities that rival the finest resorts

...Read More Online

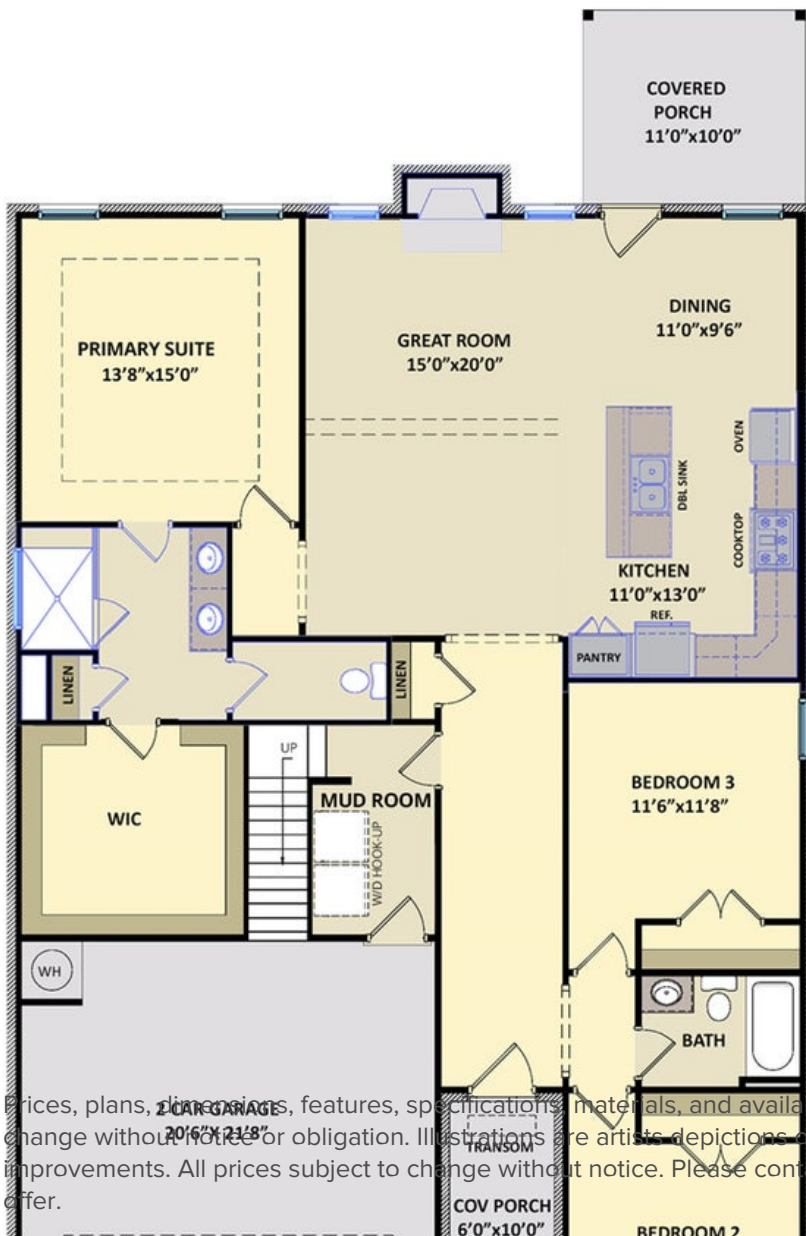
Prices, plans, dimensions, features, specifications, materials, and availability of homes or communities are subject to change without notice or obligation. Illustrations are artists depictions only and may differ from completed improvements. All prices subject to change without notice. Please contact your sales associate before writing an offer.



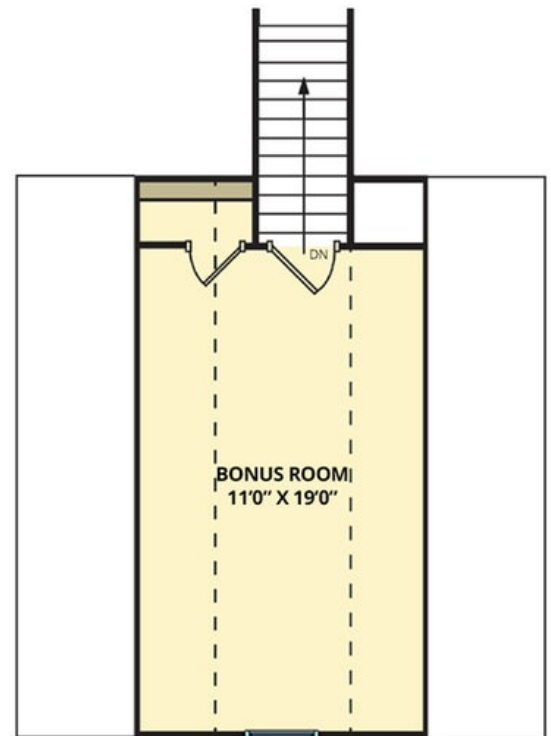
1173 Serotina Drive SE
Bolivia, NC 28422
PALMETTO CREEK - CLAIRMONT

CONTACT OUR NEW HOME SPECIALISTS
MAGGIE & JESSICA
Call Us @ 910-405-8311
info@cavinessandcates.com

FIRST FLOOR



SECOND FLOOR



Prices, plans, dimensions, features, specifications, materials, and availability of homes or communities are subject to change without notice or obligation. Illustrations are artists' depictions only and may differ from completed improvements. All prices subject to change without notice. Please contact your sales associate before writing an offer.

