



1218 Mandevilla Drive SE
Bolivia, NC 28422

PALMETTO CREEK - SOUTHPORT

CONTACT OUR NEW HOME SPECIALISTS

MAGGIE & JESSICA

Call Us @ 910-405-8311

info@cavinessandcates.com



Priced

\$489,900

2,163 Sq Ft

1.0 Story

3 Beds

2.0 Baths

2 Car Garage

Primary Bedroom: Down

About 1218 Mandevilla Drive SE

- First-floor Primary Suite with tray ceiling and crown molding, dual walk-in closets with wood shelving and sweater tower, zero entry corner tile shower with bench seating, separate vanities with quartz countertops in "Niagara", white shaker cabinets with drawer stack, framed mirrors, private water closet, linen closet with wood shelving, and tile flooring.
- Gourmet kitchen with sink overlooking the great room, granite countertops in "Santa Cecilia Light", "Arctic White" subway tile backsplash set in a brick pattern, white shaker cabinets, discreet trash can roll-out cabinet, and pantry cabinet; Stainless steel microwave, dishwasher, double wall oven,

...Read More Online

About The Community.

Palmetto Creek is a gated community located between Wilmington, North Carolina and Myrtle Beach, South Carolina in an area known as the Brunswick Islands. The Palmetto Creek community is lined with palmetto palms, small pocket lakes, and walking trails created for long walks and outside activities. It is the perfect place for that dream home on the coast or rewarding retirement home. Cradled by lush landscaping, this charming gated community offers low-maintenance living, giving you time to explore its many hidden treasures. Enjoy a laid-back lifestyle in the community as well as the local area. With the

LOOKING FOR A LOWER RATE?

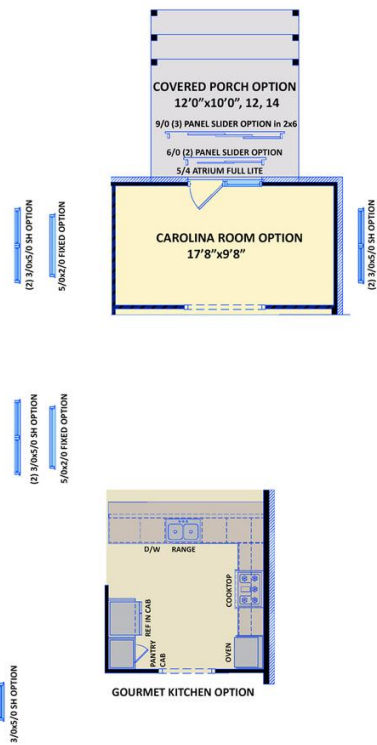
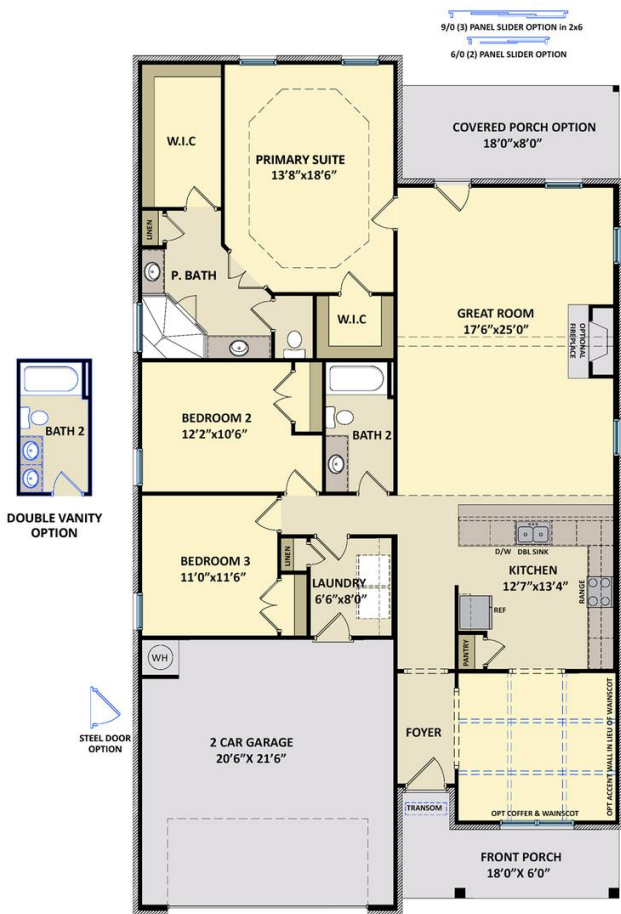
...Read More Online

Prices, plans, dimensions, features, specifications, materials, and availability of homes or communities are subject to change without notice or obligation. Illustrations are artists depictions only and may differ from completed improvements. All prices subject to change without notice. Please contact your sales associate before writing an offer.

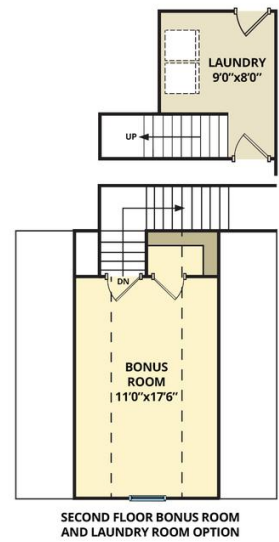


The Southport
 CC1983

FIRST FLOOR



SECOND FLOOR OPTION



SECOND FLOOR BONUS ROOM AND LAUNDRY ROOM OPTION

Prices, plans, dimensions, features, specifications, materials, and availability of homes or communities are subject to change without notice or obligation. Illustrations are artists depictions only and may differ from completed improvements. All prices subject to change without notice. Please contact your sales associate before writing an offer.

