



1402 Serrulata Drive
Bolivia, NC 28422
PALMETTO CREEK - SOUTHPORT

CONTACT OUR NEW HOME SPECIALISTS
MAGGIE & JESSICA
Call Us @ 910-405-8311
info@cavinessandcates.com



Priced

\$489,900

Full Brick Elevation

2,163 Sq Ft

1.0 Story

3 Beds

2.0 Baths

2 Car Garage

Primary Bedroom: Down

About 1402 Serrulata Drive

- First-floor Primary Suite with tray ceiling and crown molding, dual walk-in closets with wood shelving and sweater tower, zero entry corner tile shower with bench seating, separate vanities with quartz countertops in "Niagara", white shaker cabinets with drawer stack, framed mirrors, private water closet, linen closet with wood shelving, and tile flooring.
- Gourmet kitchen with sink overlooking the great room, granite countertops in "New Caledonia", "Arctic White" subway tile backsplash set in a brick pattern, white shaker cabinets, discreet trash can roll-out cabinet, and pantry cabinet; Stainless steel microwave, dishwasher, double wall oven,

...Read More Online

About The Community.

Palmetto Creek is a gated community located between Wilmington, North Carolina and Myrtle Beach, South Carolina in an area known as the Brunswick Islands. The Palmetto Creek community is lined with palmetto palms, small pocket lakes, and walking trails created for long walks and outside activities. It is the perfect place for that dream home on the coast or rewarding retirement home. Cradled by lush landscaping, this charming gated community offers low-maintenance living, giving you time to explore its many hidden treasures. Enjoy a laid-back lifestyle in the community as well as the local area. With the mild four-season climate, the low tax rate, and low cost of living, your story can only get better!

What's on-site at Palmetto Creek will enrich your life's story as well. Amenities that rival the finest resorts

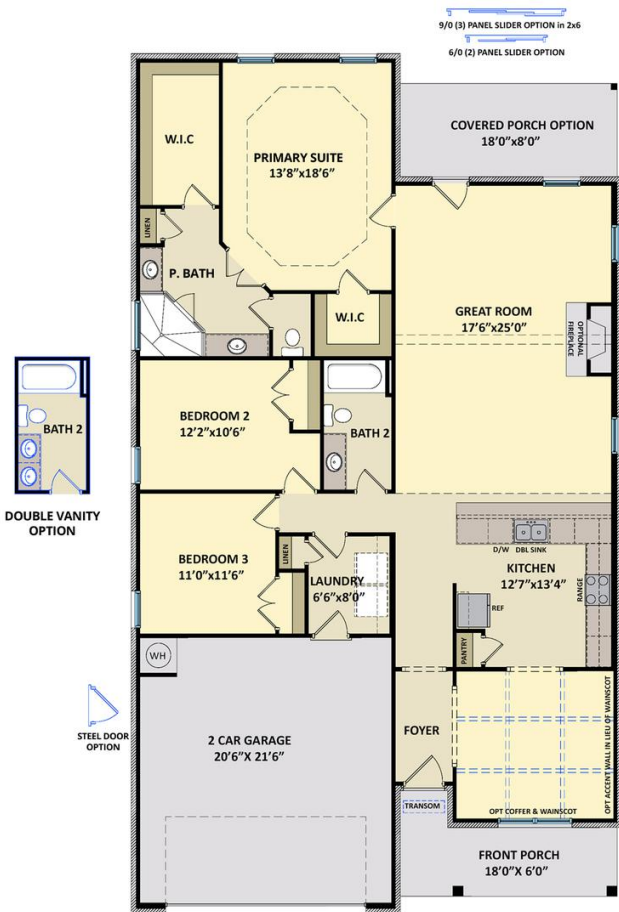
...Read More Online

Prices, plans, dimensions, features, specifications, materials, and availability of homes or communities are subject to change without notice or obligation. Illustrations are artists depictions only and may differ from completed improvements. All prices subject to change without notice. Please contact your sales associate before writing an offer.

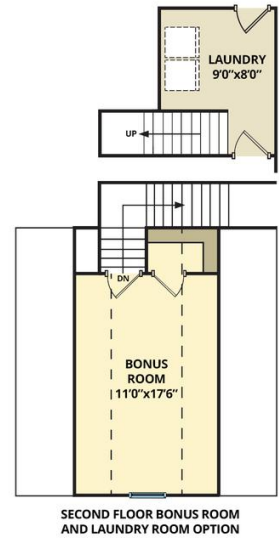
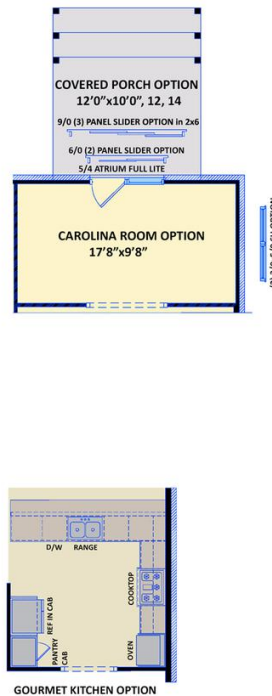


The Southport
CC1983

FIRST FLOOR



SECOND FLOOR OPTION



Prices, plans, dimensions, features, specifications, materials, and availability of homes or communities are subject to change without notice or obligation. Illustrations are artists depictions only and may differ from completed improvements. All prices subject to change without notice. Please contact your sales associate before writing an offer.

