



2,560 Sq. Ft.

2 Stories

4 Bed

3.5 Bath

2 Garage

Master Bed: Down

About Clayton

- Primary suite on the first floor with tray ceiling, dual sinks, center drawer stack in vanity, private water closet, walk-in closet, garden tub and separate shower.
- Great room with optional gas log fireplace and access to optional covered porch or grill patio.
- Formal Dining Room with coffered ceiling and wainscoting detail option
- Kitchen open to great room with breakfast area, island with sink, and pantry
- Mudroom in garage entry with optional bench and coat station, coat closet, and powder room
- Second floor with loft at top of stairs, home office, laundry room, 3 additional bedrooms, 2 full

...Read More Online

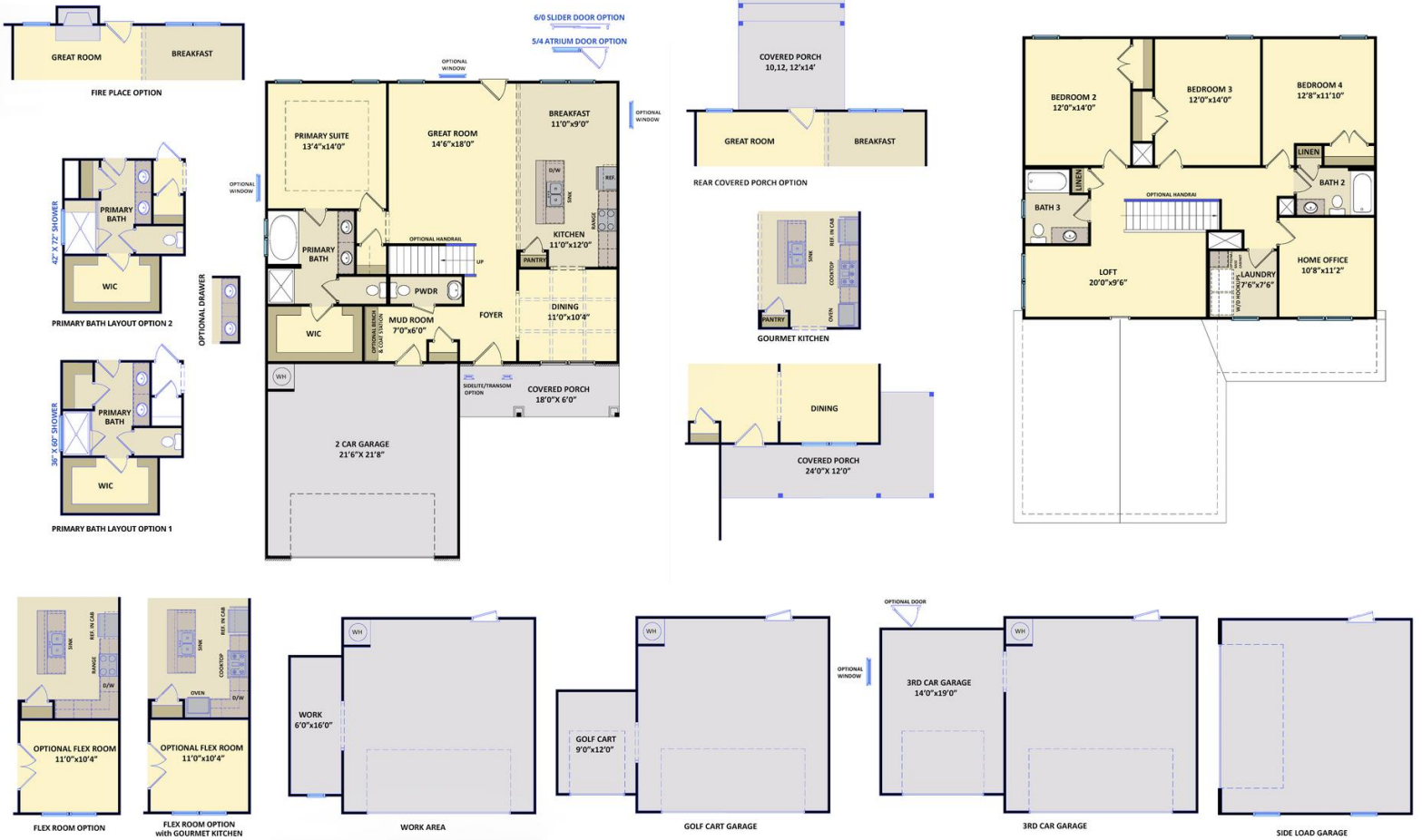


Elevation D

The Clayton
CC2560

FIRST FLOOR

SECOND FLOOR



Prices, plans, dimensions, features, specifications, materials, and availability of homes or communities are subject to change without notice or obligation. Illustrations are artists depictions only and may differ from completed improvements. All prices subject to change without notice. Please contact your sales associate before writing an offer.

