



202 Enfield Drive
Carthage, NC 28327
BROOKWOOD - CAMBRIDGE

CONTACT OUR NEW HOME SPECIALIST
JENN HUNTOON
Call Us @ 910-405-8311
jenn@cavinessandcates.com



Priced
\$316,500

Elevation C
2,432 Sq Ft
1.5 Story
4 Beds
3.0 Baths
3 Car Garage
Master Bedroom: Down

About 202 Enfield Drive

- Great room with gas log fireplace
- Kitchen features granite countertops, tile backsplash, white cabinets, stainless steel microwave, dishwasher, and smooth top range, satin nickel finishes, pantry, breakfast area, and island with sink overlooking the great room
- Spacious covered deck, perfect for entertaining
- Master suite on first floor with beautiful tray ceiling, walk-in closet, master bath with his and hers sinks with cultured marble vanity, garden tub and separate shower with tile surround and tile

...Read More Online

About The Community.

Find your place to call home in Brookwood! Located just off of convenient Highway 22, Brookwood is 40 minutes to both Longstreet and Butner gates on Fort Bragg, 5 minutes to downtown Carthage, and 15 minutes to downtown Southern Pines. This community features +/- half acre home sites and a variety of floorplans to fit your life.

Families will enjoy the 1.5 mile distance to the Moore County Hillcrest Park which includes a splash pad and recreation center as well as the .5 mile distance to Highlanders Farm fresh produce and homemade ice cream.

...Read More Online

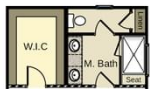
Prices, plans, dimensions, features, specifications, materials, and availability of homes or communities are subject to change without notice or obligation. Illustrations are artists depictions only and may differ from completed improvements. All prices subject to change without notice. Please contact your sales associate before writing an offer.



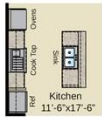
The Cambridge CC1850

FIRST FLOOR

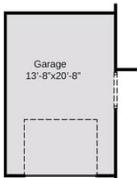
SECOND FLOOR



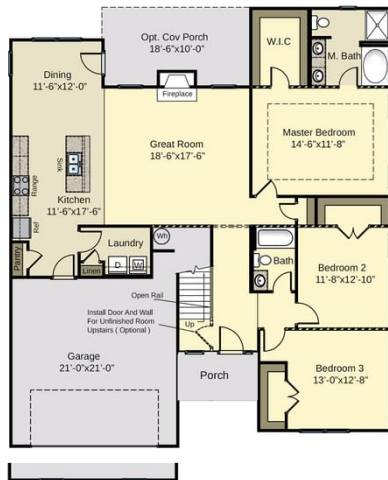
Master Bath Option



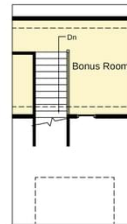
Optional Gourmet Kitchen



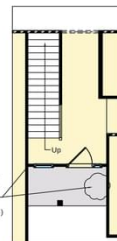
Optional 3rd Car Garage



Side Load Garage

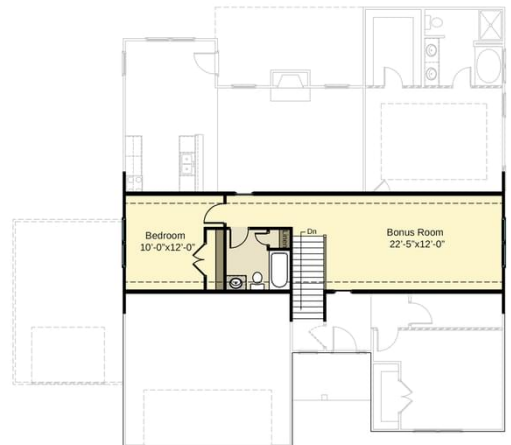


Stair Option Sc Code



Move Front Wall Out 12" From Base Plan To Accommodate 17 Risers For South Carolina (Add 10 sq)

Stair Option Sc Code



Prices, plans, dimensions, features, specifications, materials, and availability of homes or communities are subject to change without notice or obligation. Illustrations are artists depictions only and may differ from completed improvements. All prices subject to change without notice. Please contact your sales associate before writing an offer.

Prices, plans, dimensions, features, specifications, materials, and availability of homes or communities are subject to change without notice or obligation. Illustrations are artists depictions only and may differ from completed improvements. All prices subject to change without notice. Please contact your sales associate before writing an offer.