



408 Piney Oak Drive  
Carthage, NC 28327

**LAUREL RIDGE - REDWOOD**

CONTACT OUR NEW HOME SPECIALISTS

**MAGGIE & JESSICA**

Call Us @ 910-405-8311

info@cavinessandcates.com



**Priced**

**\$524,900**

Elevation K

2,672 Sq Ft

1.5 Story

3 Beds

3.0 Baths

2 Car Garage

Primary Bedroom: Down

## About 408 Piney Oak Drive

- Spacious great room with gas log fireplace with decorative mantle and granite surround in "Absolute Black".
- Covered deck and grill deck create the perfect outdoor living space.
- Elegant formal dining room in Sherwin Williams "Oyster Bay" with stunning coffered ceiling and wainscoting detail
- Two-piece crown molding throughout main living area.
- Gourmet kitchen features granite countertops in "Santa Cecilia Light", "Arctic White" tile backsplash

...Read More Online

## About The Community.

Laurel Ridge offers +/- .5 acre wooded lots, common areas maintained by the HOA, and an excellent location. When homeowners are looking for entertainment or dining options in the area they can travel along US-15 which leads to several restaurants, bars, and shops. There are also a variety of attractions in the area, including Broadhurst Art Gallery, Sandhills Horticultural Gardens, and Rankin Museum of American History.

Homeowners who want to get outside will find plenty of options to explore in the area. There are multiple green spaces and parks to choose from, including Moore County Parks & Rec, Nick's Creek Greenway, and James W. Tufts Memorial Park.

...Read More Online

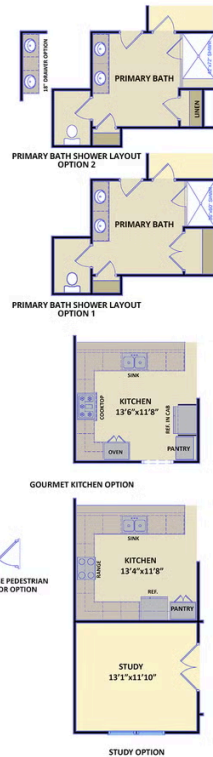
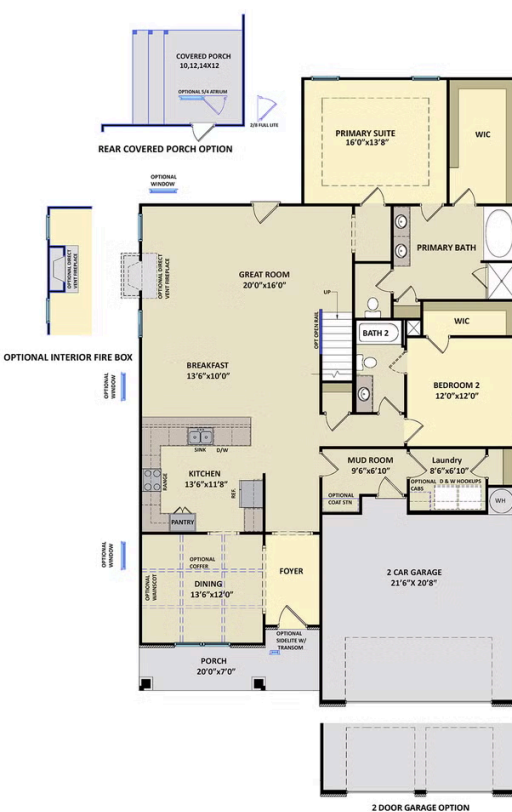
Prices, plans, dimensions, features, specifications, materials, and availability of homes or communities are subject to change without notice or obligation. Illustrations are artists depictions only and may differ from completed improvements. All prices subject to change without notice. Please contact your sales associate before writing an offer.



ARCHIVED 1/04/2024

**The Redwood**  
CC2672

**FIRST FLOOR**



**SECOND FLOOR**

