



409 Piney Oak Drive  
Carthage, NC 28327

**LAUREL RIDGE - CAMBRIDGE**

CONTACT OUR NEW HOME SPECIALISTS

**MAGGIE & JESSICA**

Call Us @ 910-405-8311

info@cavinessandcates.com



**Priced**

**\$494,900**

2,432 Sq Ft

1.5 Story

3 Beds

3.0 Baths

2 Car Garage

Primary Bedroom: Down

## About 409 Piney Oak Drive

- Great room with gas log fireplace with decorative mantle and granite surround in "Absolute Back".
- Open gourmet kitchen with island with sink overlooking the great room, quartz countertops in "Carrera Cloud", subway tile backsplash in "Arctic White" set in a herringbone pattern, white shaker cabinets, discreet dual trash can roll out cabinet, and pantry cabinet; Stainless steel microwave, dishwasher, double wall oven, and smooth cooktop.
- Dining room with views to the backyard and access to rear covered deck and grill deck.
- Two-piece crown molding throughout the foyer, great room, gourmet kitchen, and dining area.

[...Read More Online](#)

## About The Community.

Laurel Ridge offers +/- .5 acre wooded lots, common areas maintained by the HOA, and an excellent location. When homeowners are looking for entertainment or dining options in the area they can travel along US-15 which leads to several restaurants, bars, and shops. There are also a variety of attractions in the area, including Broadhurst Art Gallery, Sandhills Horticultural Gardens, and Rankin Museum of American History.

Homeowners who want to get outside will find plenty of options to explore in the area. There are multiple green spaces and parks to choose from, including Moore County Parks & Rec, Nick's Creek Greenway, and James W. Tufts Memorial Park.

[...Read More Online](#)

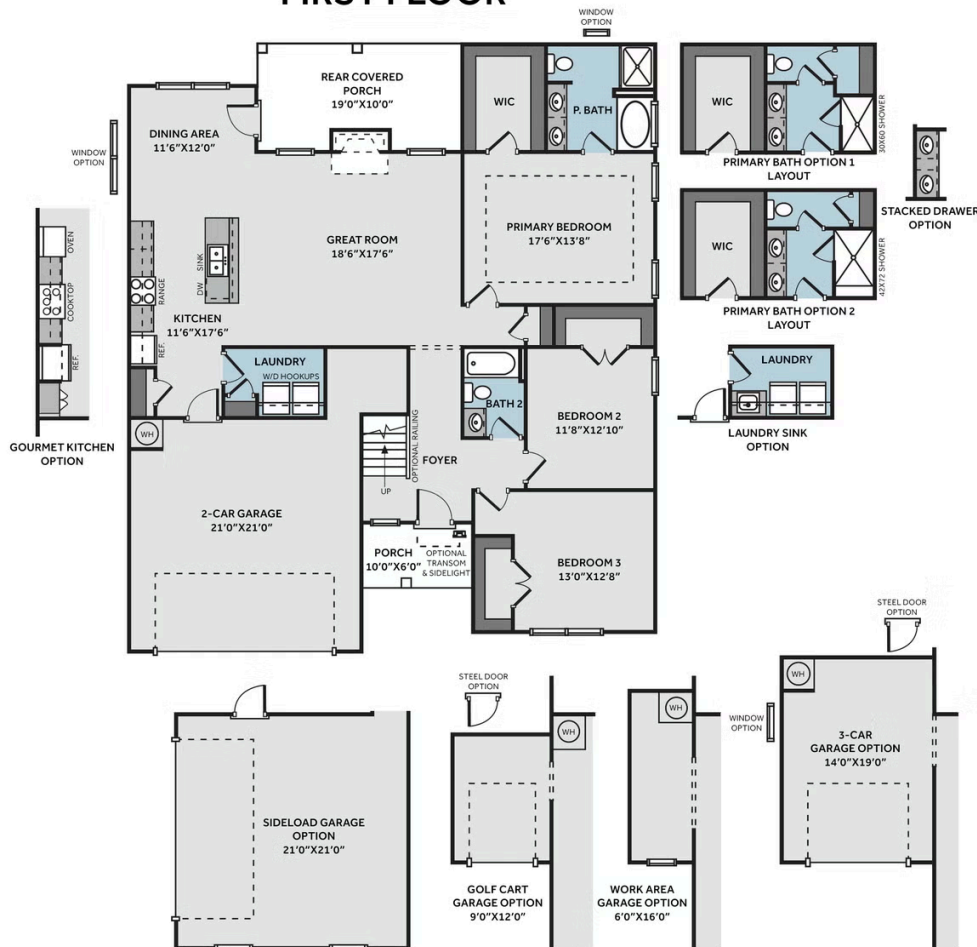
Prices, plans, dimensions, features, specifications, materials, and availability of homes or communities are subject to change without notice or obligation. Illustrations are artists depictions only and may differ from completed improvements. All prices subject to change without notice. Please contact your sales associate before writing an offer.



## THE CAMBRIDGE

CC1850

### FIRST FLOOR



### SECOND FLOOR

