



425 Piney Oak Drive
Carthage, NC 28327

LAUREL RIDGE - LIBERTY

CONTACT OUR NEW HOME SPECIALISTS

MAGGIE & JESSICA

Call Us @ 910-405-8311

info@cavinessandcates.com



Priced

\$475,900

Elevation B

2,657 Sq Ft

1.5 Story

4 Beds

3.0 Baths

3 Car Garage

Master Bedroom: Down

About 425 Piney Oak Drive

- Open gourmet kitchen features a breakfast area, granite countertops in "Luna Pearl", subway tile backsplash in "Arctic White" set in a beautiful brickwork pattern, white shaker cabinets, a corner pantry, and an island with the sink overlooking the great room; stainless steel microwave, dishwasher, double wall oven, and smooth cooktop.
- Great room with gas log fireplace with a decorative mantle and granite surround in "Steel Grey", built-in shelving, separate sitting area, and cathedral ceiling; access to covered porch and grill patio creates a perfect outdoor living space.

...Read More Online

About The Community.

Laurel Ridge offers +/- .5 acre wooded lots, common areas maintained by the HOA, and an excellent location. When homeowners are looking for entertainment or dining options in the area they can travel along US-15 which leads to several restaurants, bars, and shops. There are also a variety of attractions in the area, including Broadhurst Art Gallery, Sandhills Horticultural Gardens, and Rankin Museum of American History.

Homeowners who want to get outside will find plenty of options to explore in the area. There are multiple green spaces and parks to choose from, including Moore County Parks & Rec, Nick's Creek Greenway, and James W. Tufts Memorial Park.

...Read More Online

Prices, plans, dimensions, features, specifications, materials, and availability of homes or communities are subject to change without notice or obligation. Illustrations are artists depictions only and may differ from completed improvements. All prices subject to change without notice. Please contact your sales associate before writing an offer.



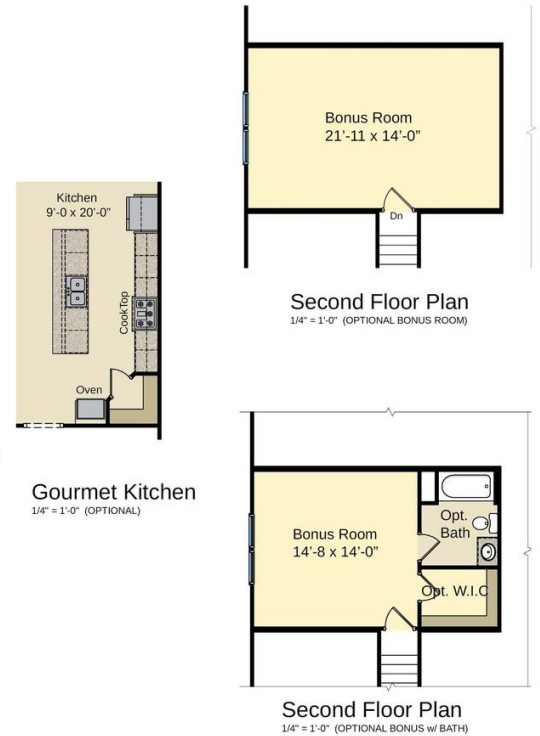
SIMILAR HOME

The Liberty CC2322

FIRST FLOOR



SECOND FLOOR (Optional)



Mud Room
1/4" = 1'-0" (NO STAIRS / BONUS ROOM)

Gourmet Kitchen
1/4" = 1'-0" (OPTIONAL)

Second Floor Plan
1/4" = 1'-0" (OPTIONAL BONUS W/ BATH)

Prices, plans, dimensions, features, specifications, materials, and availability of homes or communities are subject to change without notice or obligation. Illustrations are artists depictions only and may differ from completed improvements. All prices subject to change without notice. Please contact your sales associate before writing an offer.