



522 Pondpine Lane  
Carthage, NC 28327

LAUREL RIDGE - LIBERTY

CONTACT OUR NEW HOME SPECIALISTS

**MAGGIE & JESSICA**

Call Us @ 910-405-8311

info@cavinessandcates.com



**Priced**

**\$391,900**

Elevation C

2,657 Sq Ft

1.5 Story

3 Beds

3.0 Baths

3 Car Garage

Primary Bedroom: Down

## About 522 Pondpine Lane

- Open gourmet kitchen features a breakfast area, granite countertops; subway tile backsplash set in a beautiful brickwork pattern; white cabinets; stainless steel microwave, dishwasher, double wall oven, and smooth cooktop; satin nickel finishes; corner pantry; and an island with breakfast area and sink overlooking the great room!
- Great room with gas log fireplace, built-in shelving, separate sitting area, and cathedral ceiling
- Sliding door access to covered porch and grill patio creates a perfect outdoor living space
- Elegant formal dining room with stunning coffered ceiling and wainscoting detail

...Read More Online

## About The Community.

Laurel Ridge offers +/- .5 acre wooded lots, common areas maintained by the HOA, and an excellent location. When homeowners are looking for entertainment or dining options in the area they can travel along US-15 which leads to several restaurants, bars, and shops. There are also a variety of attractions in the area, including Broadhurst Art Gallery, Sandhills Horticultural Gardens, and Rankin Museum of American History.

Homeowners who want to get outside will find plenty of options to explore in the area. There are multiple green spaces and parks to choose from, including Moore County Parks & Rec, Nick's Creek Greenway, and James W. Tufts Memorial Park.

...Read More Online

Prices, plans, dimensions, features, specifications, materials, and availability of homes or communities are subject to change without notice or obligation. Illustrations are artists depictions only and may differ from completed improvements. All prices subject to change without notice. Please contact your sales associate before writing an offer.

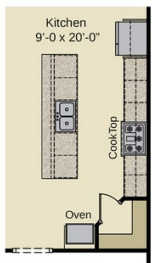


**ARCHIVED**

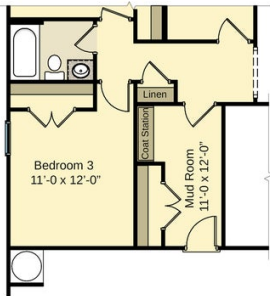
**The Liberty**  
 CC2322

**FIRST FLOOR**

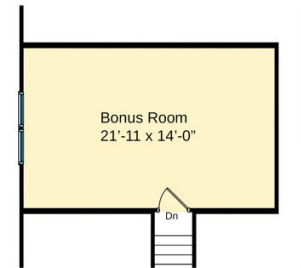
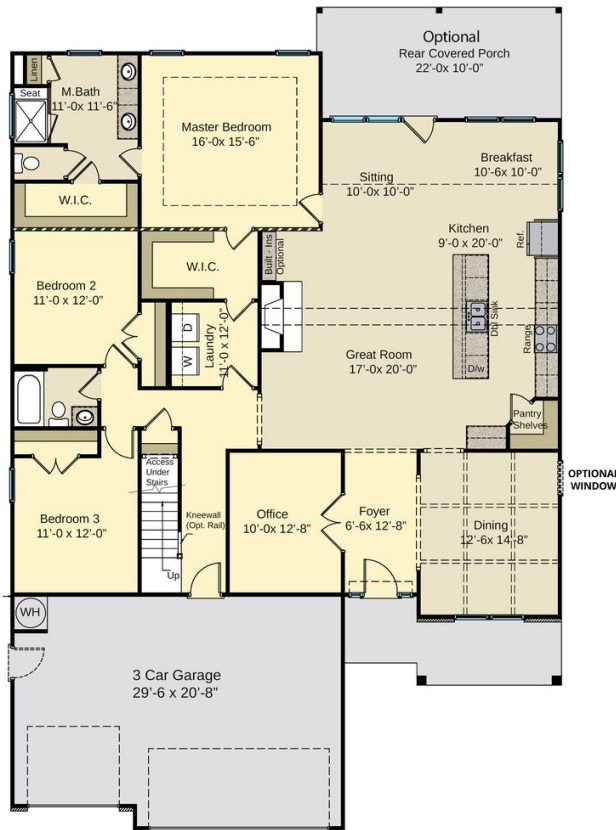
**SECOND FLOOR (Optional)**



**Gourmet Kitchen**  
 1/4" = 1'-0" (OPTIONAL)



**Mud Room**  
 1/4" = 1'-0" (NO STAIRS / BONUS ROOM)



**Second Floor Plan**  
 1/4" = 1'-0" (OPTIONAL BONUS ROOM)



**Second Floor Plan**  
 1/4" = 1'-0" (OPTIONAL BONUS w/ BATH)

Prices, plans, dimensions, features, specifications, materials, and availability of homes or communities are subject to change without notice or obligation. Illustrations are artists depictions only and may differ from completed improvements. All prices subject to change without notice. Please contact your sales associate before writing an offer.

