



525 Pondpine Lane
Carthage, NC 28327
LAUREL RIDGE - NEWTON

CONTACT OUR NEW HOME SPECIALISTS
MAGGIE & JESSICA
Call Us @ 910-405-8311
info@cavinessandcates.com



Priced

\$364,900

Coastal Elevation - Archived
9/20/2022

2,592 Sq Ft

1.5 Story

3 Beds

2.0 Baths

3 Car Garage

Primary Bedroom: Down

About 525 Pondpine Lane

- Great room with fireplace
- Gourmet kitchen features granite countertops, subway tile backsplash, white cabinets, stainless steel microwave, dishwasher, double wall ovens, and smooth cooktop, satin nickel finishes, island with sink overlooking the great room and breakfast area open to great room; spacious corner pantry
- Formal dining room with coffered ceiling and wainscoting detail option
- 2 piece crown molding
- Master suite with tray ceiling and crown molding, walk-in closet with sweater tower, spacious tile

...Read More Online

About The Community.

Visit us for our Open House Event! [Click here for more details!](#)

Laurel Ridge offers +/- .5 acre wooded lots, common areas maintained by the HOA, and an excellent location. When homeowners are looking for entertainment or dining options in the area they can travel along US-15 which leads to several restaurants, bars, and shops. There are also a variety of attractions in the area, including Broadhurst Art Gallery, Sandhills Horticultural Gardens, and Rankin Museum of American History.

Homeowners who want to get outside will find plenty of options to explore in the area. There are multiple green spaces and parks to choose from, including Moore County Parks & Rec, Nick's Creek Greenway.

...Read More Online

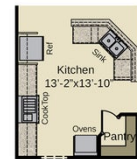
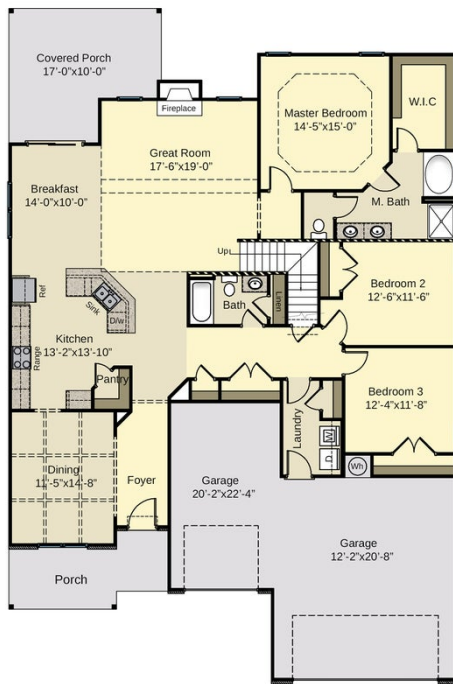
Prices, plans, dimensions, features, specifications, materials, and availability of homes or communities are subject to change without notice or obligation. Illustrations are artists depictions only and may differ from completed improvements. All prices subject to change without notice. Please contact your sales associate before writing an offer.



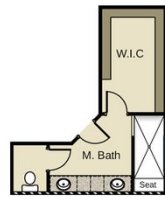
ARCHIVED 9/20/2022

The Newton
 CC2592

FIRST FLOOR

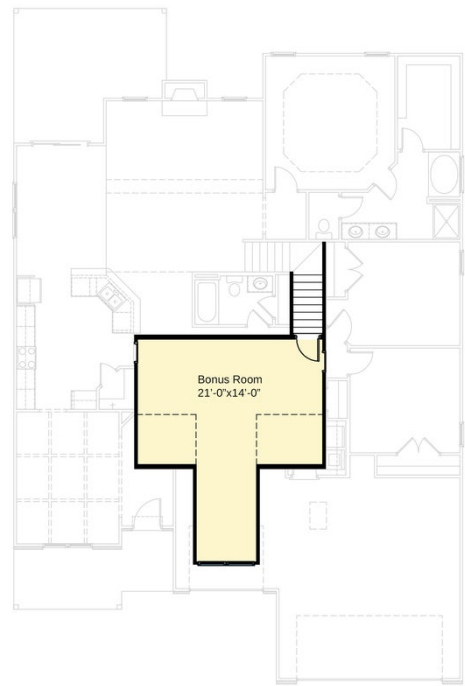


Optional Gourmet Kitchen



Optional Walk - In Shwr

SECOND FLOOR



Prices, plans, dimensions, features, specifications, materials, and availability of homes or communities are subject to change without notice or obligation. Illustrations are artists depictions only and may differ from completed improvements. All prices subject to change without notice. Please contact your sales associate before writing an offer.