



1,658 Sq. Ft.

2 Stories

3 Bed

2.5 Bath

Primary Bed: Up

About Lookout

This open-concept townhome plan packs a punch in its 1,658 square feet!

- Upon entering the home, you are greeted with a foyer, coat closet, and powder room.
- The kitchen, open to the dining area and great room, features a spacious island with seating, plenty of countertop/cabinet space, and a pantry (*please note: the layout of the kitchen/great room/dining area spaces varies from end to middle units)
- Access to a rear covered porch and storage area from the first-floor living space.
- The primary suite, located on the second floor, includes a sitting area, plenty of natural light, a walk-

...Read More Online



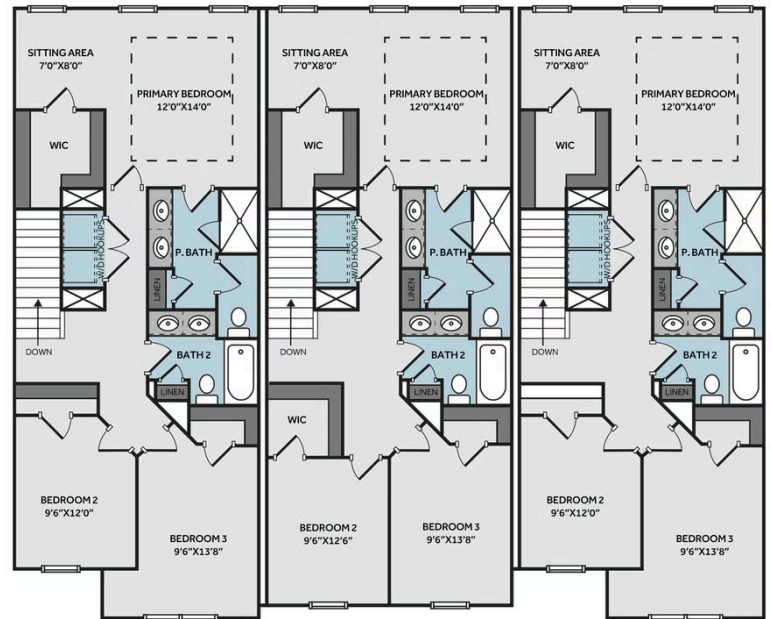
Middle Unit with B&B

THE LOOKOUT TH1658

FIRST FLOOR



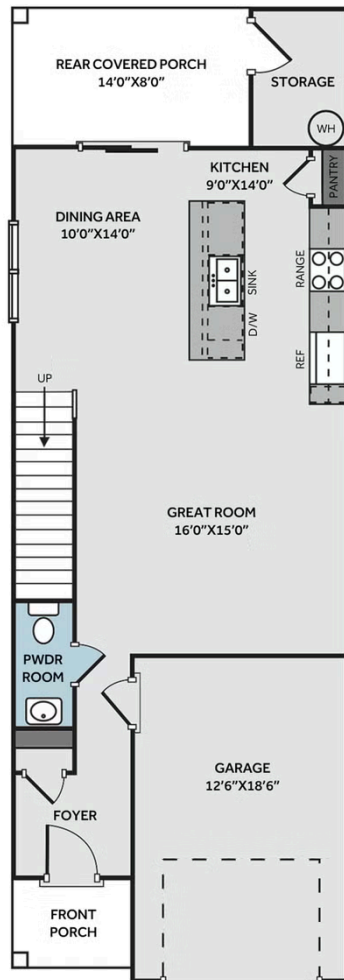
SECOND FLOOR



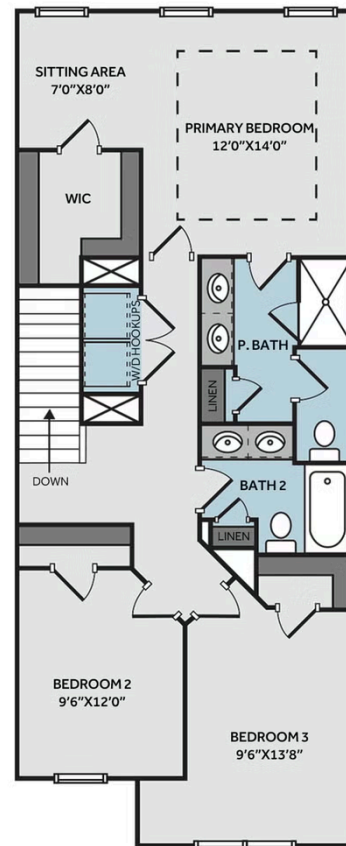
LEFT END UNIT

THE LOOKOUT TH1658 - LEFT END UNIT

FIRST FLOOR



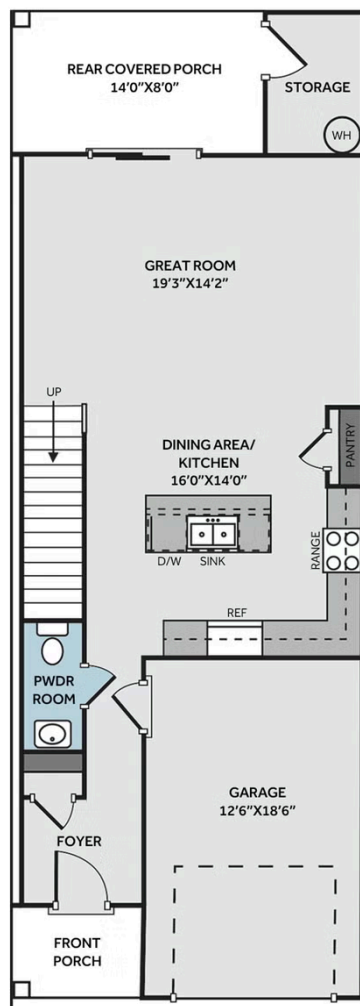
SECOND FLOOR



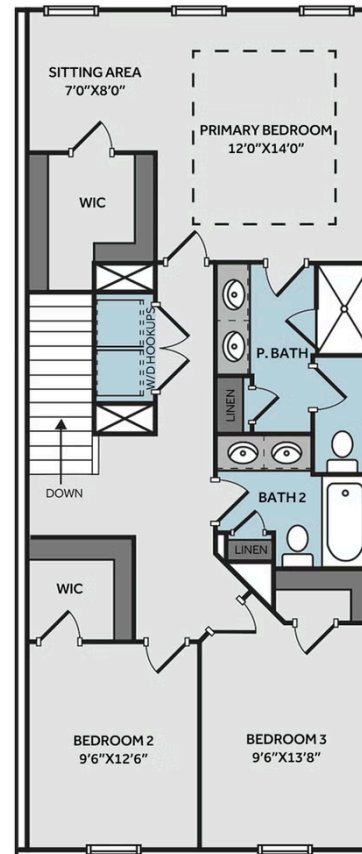
MIDDLE UNIT

THE LOOKOUT TH1658 - MIDDLE UNIT

FIRST FLOOR



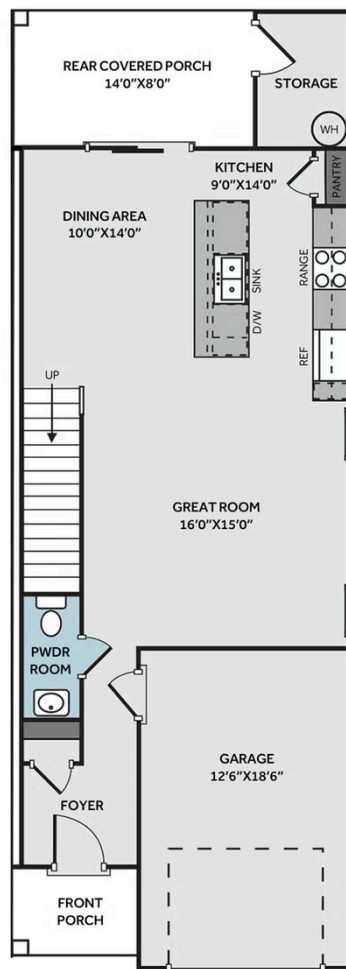
SECOND FLOOR



RIGHT END UNIT

THE LOOKOUT TH1658 - RIGHT END UNIT

FIRST FLOOR



SECOND FLOOR

