



3,156 Sq. Ft.

2 Stories

5 Bed

30.0 Bath

Primary Bed: Up

About Roanoke

This home features an upstairs AND downstairs front porch!

- Formal dining room with coffered ceiling and wainscoting detail option
- Butler pantry or desk option and walk-in pantry
- Kitchen with optional bar seating - gourmet kitchen option with double wall ovens and cooktop
- Open great room with fireplace option and built-in bookshelf option
- Breakfast area with access to covered porch or patio options.
- Guest room or flex room on first floor

...Read More Online



ARCHIVED 5/2/2022 - Elevation
B



ARCHIVED 5/2/2022 - Elevation
C



ARCHIVED 5/2/2022 - Elevation
D

ARCHIVED 8/16/2023

The Roanoke

CC3156

FIRST FLOOR

SECOND FLOOR

REAR COVERED PORCH OPTION



OPTIONAL 6/0 SLIDING DOOR



OPTIONAL 5/4 ATRIUM DOOR

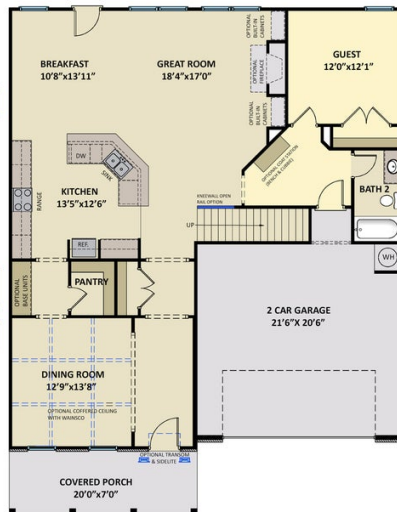


GOURMET KITCHEN OPTION

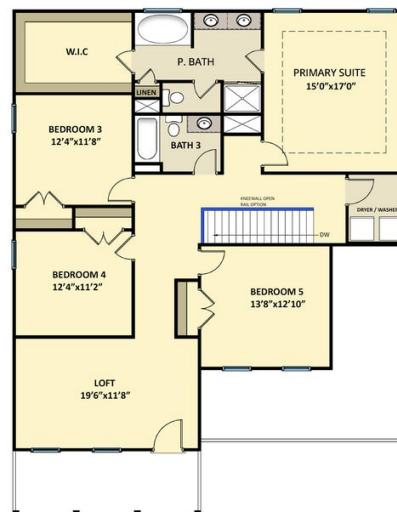
WINDOW
OPTION

WINDOW
OPTION

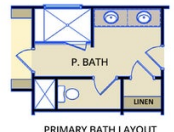
WINDOW
OPTION



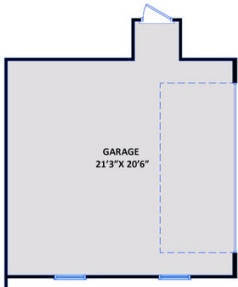
OPTIONAL
STEEL DOOR



PRIMARY BATH LAYOUT
OPTION 1



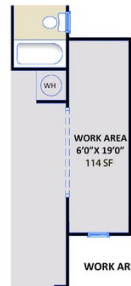
PRIMARY BATH LAYOUT
OPTION 2



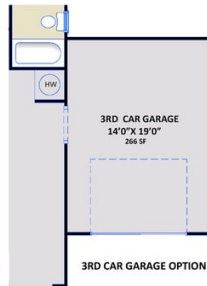
SIDE LOAD GARAGE OPTION



GOLF CART OPTION



WORK AREA OPTION



3RD CAR GARAGE OPTION



TWO DOOR GARAGE