



3,085 - 3,281 Sq. Ft.

2.5 Stories

5 Bed

3.5 Bath

2 - 3 Garage

Primary Bed: Up

About Kendleton

- Formal dining room with coffered ceiling and wainscoting detail option and added window option
- Kitchen with breakfast area, island, and butler pantry with optional base and wall cabinets and added window option; access to optional covered porch and/or Carolina Room; gourmet appliance layout option
- Great Room with optional fireplace or window
- Half bath with pedestal sink and oval mirror
- Optional coat station in garage entryway

...Read More Online

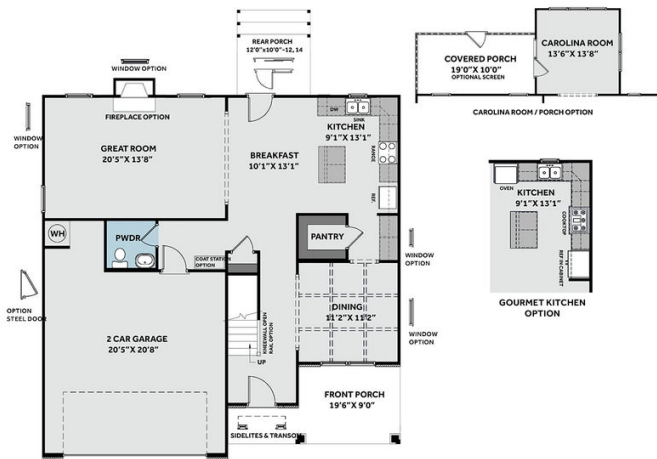


Elevation E

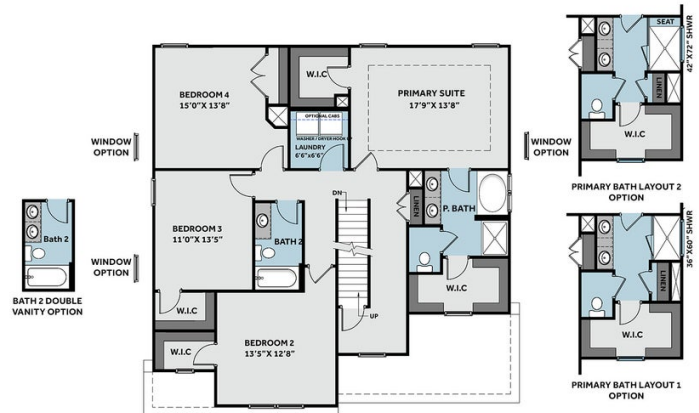
THE KENDLETON

CC2343

FIRST FLOOR



SECOND FLOOR



THIRD FLOOR

