



3,156 Sq. Ft.

2 Stories

4 Bed

3.0 Bath

Primary Bed: Up

## About Roanoke

This home features an upstairs AND downstairs front porch!

- Formal dining room with coffered ceiling and wainscoting detail option
- Butler pantry or desk option and walk-in pantry
- Kitchen with optional bar seating - gourmet kitchen option with double wall ovens and cooktop
- Open great room with fireplace option and built-in bookshelf option
- Breakfast area with access to covered porch or patio options.
- Guest room or flex room on first floor

...Read More Online



ARCHIVED 5/2/2022 - Elevation  
B



ARCHIVED 5/2/2022 - Elevation  
C



ARCHIVED 5/2/2022 - Elevation  
D

ARCHIVED 8/16/2023

## The Roanoke

CC3156

### FIRST FLOOR

### SECOND FLOOR

REAR COVERED PORCH OPTION



OPTIONAL 6/0 SLIDING DOOR



OPTIONAL 5/4 ATRIUM DOOR



GOURMET KITCHEN OPTION



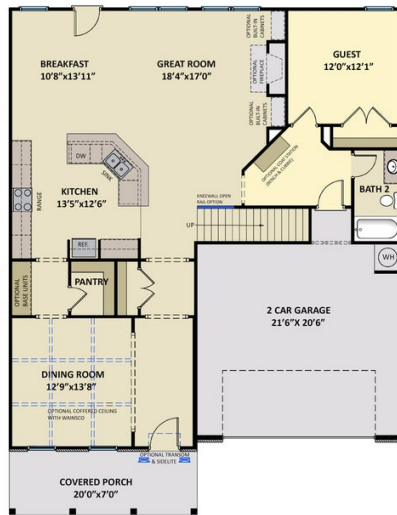
SIDE LOAD GARAGE OPTION



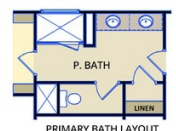
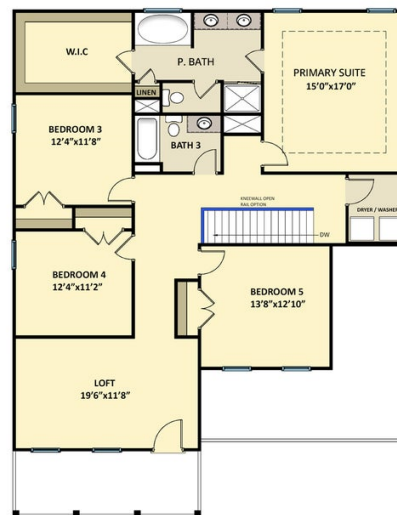
WINDOW  
OPTION

WINDOW  
OPTION

WINDOW  
OPTION



OPTIONAL  
STEEL DOOR



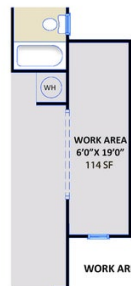
PRIMARY BATH LAYOUT  
OPTION 1



PRIMARY BATH LAYOUT  
OPTION 2



GOLF CART OPTION



WORK AREA OPTION



3RD CAR GARAGE OPTION



TWO DOOR GARAGE