



20 Firefly Lane
Clayton, NC 27527
GORDON PARK - CAMBRIDGE

CONTACT OUR NEW HOME SPECIALISTS
MAGGIE & JESSICA
Call Us @ 910-405-8311
info@cavinessandcates.com



Priced

\$398,000

Elevation C
2,432 Sq Ft
1.5 Story
4 Beds
3.0 Baths
2 Car Garage
Master Bedroom: Down

About 20 Firefly Lane

- Great room with optional fireplace
- Open kitchen with breakfast area with views to the backyard; Stainless steel appliance package.
- First-floor laundry room with linen closet.
- Covered porch.
- Primary suite on first floor with beautiful tray ceiling and walk-in closet; Primary bath with dual sinks, garden tub, and separate shower.

...Read More Online

About The Community.

Located at Glen Laurel and Powhatan Road in the sought-after town of Clayton! This community features sidewalks and close proximity to top rated schools! Clayton is home to multiple family-friendly parks and recreation sites, 3 golf-courses, greenways/walking trails, a must-see sculpture trail filled with amazing local art, and a huge community center that boasts an indoor walking track, gymnasium, fitness center, art & pottery classroom...plus a spectacular community garden with a greenhouse! Gordon Park is within 1.5 miles to retail, restaurants and major highways make it easy to get to RDU Airport or RTP.

...Read More Online

Prices, plans, dimensions, features, specifications, materials, and availability of homes or communities are subject to change without notice or obligation. Illustrations are artists depictions only and may differ from completed improvements. All prices subject to change without notice. Please contact your sales associate before writing an offer.

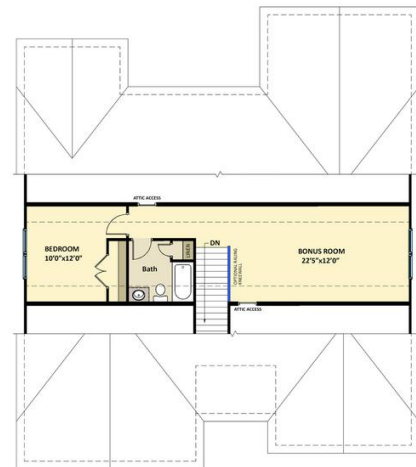


The Cambridge CC1850

FIRST FLOOR



SECOND FLOOR



Prices, plans, dimensions, features, specifications, materials, and availability of homes or communities are subject to change without notice or obligation. Illustrations are artists depictions only and may differ from completed improvements. All prices subject to change without notice. Please contact your sales associate before writing an offer.