



221 Wildlife Parkway
Clayton, NC 27527

GORDON PARK - DRAYTON

CONTACT OUR NEW HOME SPECIALISTS

MAGGIE & JESSICA

Call Us @ 910-405-8311

info@cavinessandcates.com



Elevation C - Archived 2/10/2022

2,325 Sq Ft

2.0 Story

4 Beds

2.5 Baths

2 Car Garage

Primary Bedroom: Up

About 221 Wildlife Parkway

- Elegant formal dining room with stunning coffered ceiling and wainscoting detail
- Kitchen features stainless steel microwave, dishwasher, and gas cooktop range, satin nickel finishes, island, pantry, and window over sink with views of the backyard
- Covered porch creates the perfect outdoor entertaining space
- Great room with gas fireplace
- Half bath with pedestal sink and oval mirror
- Family room and linen closet at the top of stairs

...Read More Online

About The Community.

Located at Glen Laurel and Powhatan Road in the sought-after town of Clayton! This community features sidewalks and close proximity to top rated schools! Clayton is home to multiple family-friendly parks and recreation sites, 3 golf-courses, greenways/walking trails, a must-see sculpture trail filled with amazing local art, and a huge community center that boasts an indoor walking track, gymnasium, fitness center, art & pottery classroom...plus a spectacular community garden with a greenhouse! Gordon Park is within 1.5 miles to retail, restaurants and major highways make it easy to get to RDU Airport or RTP.

...Read More Online

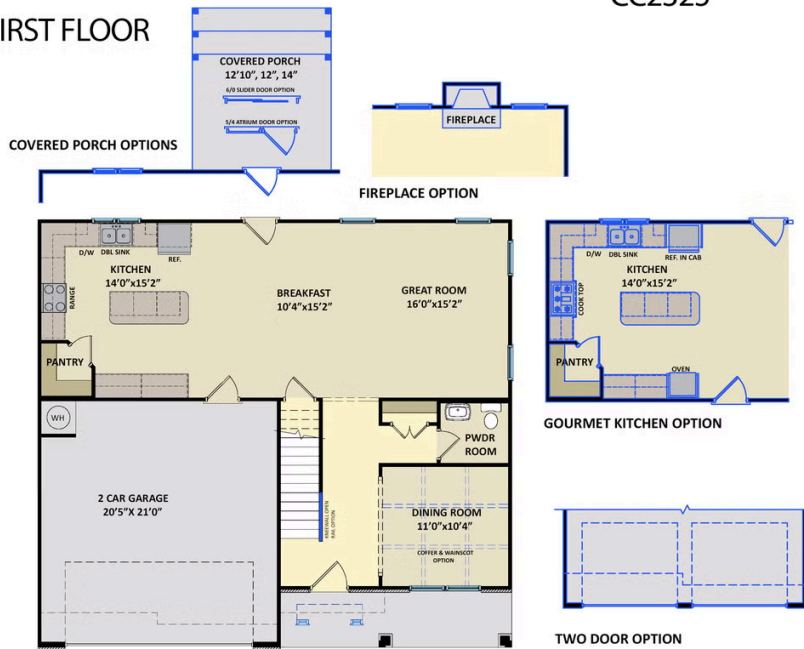
Prices, plans, dimensions, features, specifications, materials, and availability of homes or communities are subject to change without notice or obligation. Illustrations are artists depictions only and may differ from completed improvements. All prices subject to change without notice. Please contact your sales associate before writing an offer.



ARCHIVED 2021

The Drayton
CC2325

FIRST FLOOR



SECOND FLOOR

