



233 Wildlife Parkway  
Clayton, NC 27527

**GORDON PARK - BAILEY**

CONTACT OUR NEW HOME SPECIALISTS

**MAGGIE & JESSICA**

Call Us @ 910-405-8311

info@cavinessandcates.com



**Priced**

**\$325,000**

Elevation K

2,424 Sq Ft

2.5 Story

4 Beds

2.5 Baths

2 Car Garage

Master Bedroom: Up

## About 233 Wildlife Parkway

This home features an exterior with an extended front porch for enjoying time outside and a stone skirt, shake accents, and two garage doors for added curb appeal.

The great room includes a gas fireplace with Magma Black surround and views to the backyard.

A beautiful kitchen showcases white shaker cabinets, a classic white subway tile backsplash, a stainless appliance package including microwave, dishwasher, and gas range, granite countertops, and a breakfast nook option that opens to a covered porch overlooking the backyard.

Head upstairs with metal baluster where you will find all bedrooms in the home. The master suite includes a stunning tray ceiling detail, walk-in closet, his and hers sinks with cultured marble vanity and

...Read More Online

## About The Community.

### **COMING SOON! Join the VIP list to be the first to know details and get exclusive information on upcoming events!**

Located at Glen Laurel and Powhatan Road in the sought-after town of Clayton! This community features sidewalks and close proximity to top rated schools! Clayton is home to multiple family-friendly parks and recreation sites, 3 golf-courses, greenways/walking trails, a must-see sculpture trail filled with amazing local art, and a huge community center that boasts an indoor walking track, gymnasium, fitness center, art & pottery classroom...plus a spectacular community garden with a greenhouse! Gordon Park is within

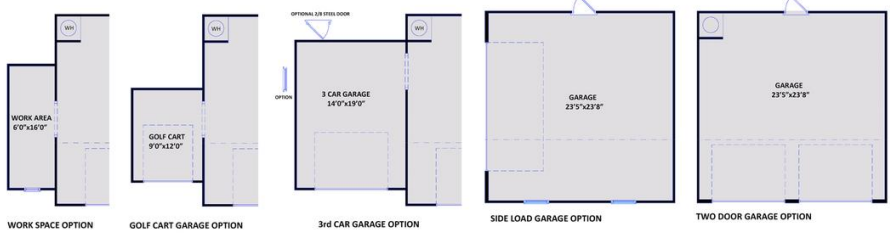
...Read More Online

Prices, plans, dimensions, features, specifications, materials, and availability of homes or communities are subject to change without notice or obligation. Illustrations are artists depictions only and may differ from completed improvements. All prices subject to change without notice. Please contact your sales associate before writing an offer.



**The Bailey**  
CC2136

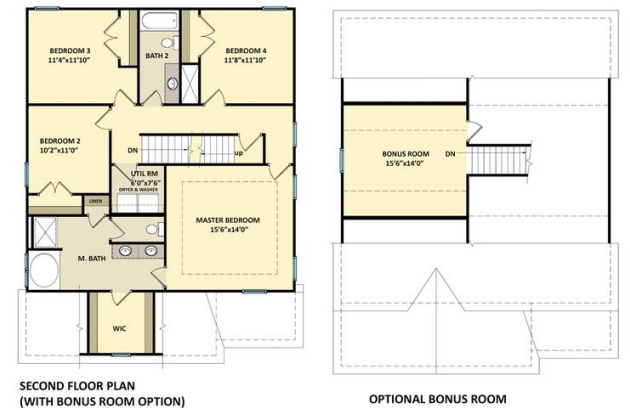
**FIRST FLOOR**



**SECOND FLOOR**



**SECOND FLOOR WITH BONUS ROOM**



Prices, plans, dimensions, features, specifications, materials, and availability of homes or communities are subject to change without notice or obligation. Illustrations are artists depictions only and may differ from completed improvements. All prices subject to change without notice. Please contact your sales associate before writing an offer.

