



46 Wildlife Parkway
Clayton, NC 27527
GORDON PARK - CLAYTON

CONTACT OUR NEW HOME SPECIALISTS

MAGGIE & JESSICA

Call Us @ 910-405-8311

info@cavinessandcates.com



Priced

\$409,000

ARCHIVED 07/07/2022 - Elevation D

2,560 Sq Ft

2.0 Story

4 Beds

3.5 Baths

2 Car Garage

Primary Bedroom: Down

About 46 Wildlife Parkway

- Primary suite on the first floor with dual sinks, private water closet, and walk-in closet; Primary bath with garden tub and separate shower.
- Great room with gas log fireplace with decorative mantle and granite surround.
- Covered porch.
- Formal Dining Room with coffered ceiling and wainscoting detail.
- Kitchen open to great room with breakfast area, island with sink overlooking the great room, and

...Read More Online

About The Community.

Located at Glen Laurel and Powhatan Road in the sought-after town of Clayton! This community features sidewalks and close proximity to top rated schools! Clayton is home to multiple family-friendly parks and recreation sites, 3 golf-courses, greenways/walking trails, a must-see sculpture trail filled with amazing local art, and a huge community center that boasts an indoor walking track, gymnasium, fitness center, art & pottery classroom...plus a spectacular community garden with a greenhouse! Gordon Park is within 1.5 miles to retail, restaurants and major highways make it easy to get to RDU Airport or RTP.

...Read More Online

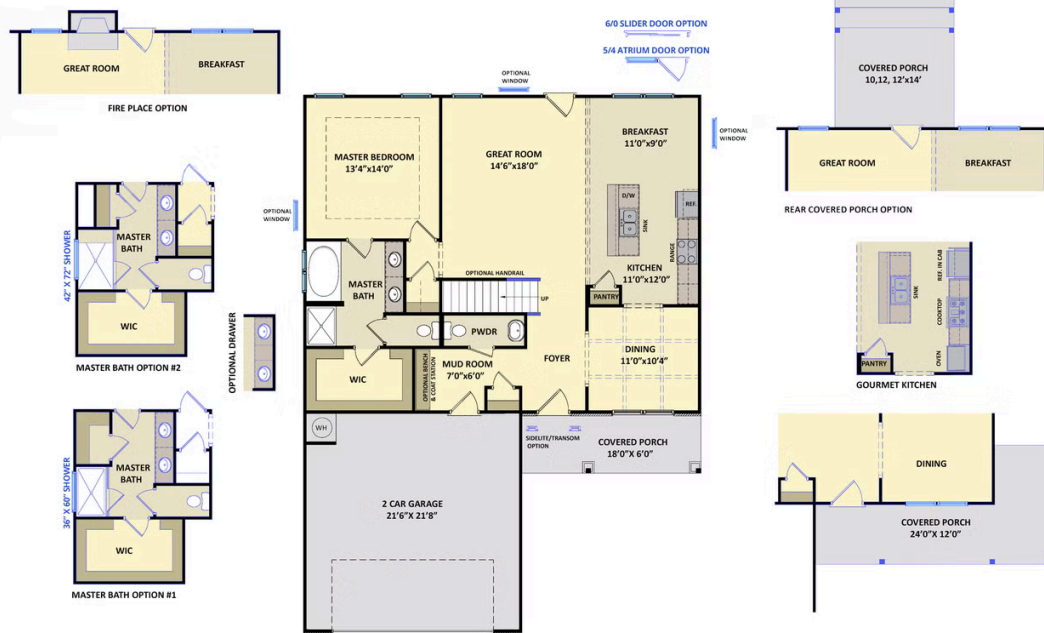
Prices, plans, dimensions, features, specifications, materials, and availability of homes or communities are subject to change without notice or obligation. Illustrations are artists depictions only and may differ from completed improvements. All prices subject to change without notice. Please contact your sales associate before writing an offer.



ARCHIVED 07/07/2022

The Clayton
CC2560

FIRST FLOOR



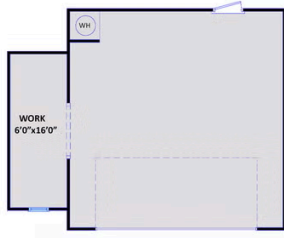
SECOND FLOOR



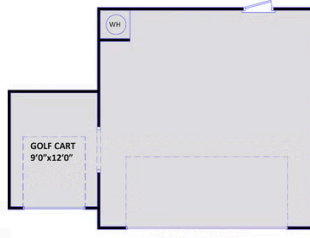
FLEX ROOM OPTION



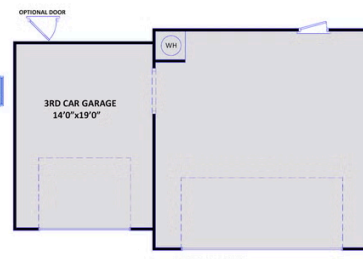
FLEX ROOM OPTION with GOURMET KITCHEN



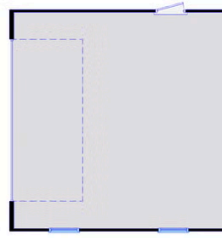
WORK AREA



GOLF CART GARAGE



3RD CAR GARAGE



SIDE LOAD GARAGE