



509 National Drive  
Clayton, NC 27527  
**GORDON PARK - BRUNSWICK**

CONTACT OUR NEW HOME SPECIALISTS

**MAGGIE & JESSICA**

Call Us @ 910-405-8311

info@cavinessandcates.com



**Priced**

**\$296,900**

Elevation K

2,355 Sq Ft

2.0 Story

4 Beds

2.5 Baths

2 Car Garage

Primary Bedroom: Up

## About 509 National Drive

- The entrance of this 2 story home showcases a 2 story ceiling with hanging decorative light fixture
- Eat-in kitchen features granite countertops, subway tile backsplash, white cabinets, stainless steel microwave, dishwasher, and gas cooktop range, satin nickel finishes, pantry, large island overlooks the great room, and window over sink with views to the backyard!
- Covered porch creates the perfect outdoor space
- Great room with gas log fireplace
- Elegant formal dining room with stunning coffered ceiling and wainscoting detail

...Read More Online

## About The Community.

Located at Glen Laurel and Powhatan Road in the sought-after town of Clayton! This community features sidewalks and close proximity to top rated schools! Clayton is home to multiple family-friendly parks and recreation sites, 3 golf-courses, greenways/walking trails, a must-see sculpture trail filled with amazing local art, and a huge community center that boasts an indoor walking track, gymnasium, fitness center, art & pottery classroom...plus a spectacular community garden with a greenhouse! Gordon Park is within 1.5 miles to retail, restaurants and major highways make it easy to get to RDU Airport or RTP.

...Read More Online

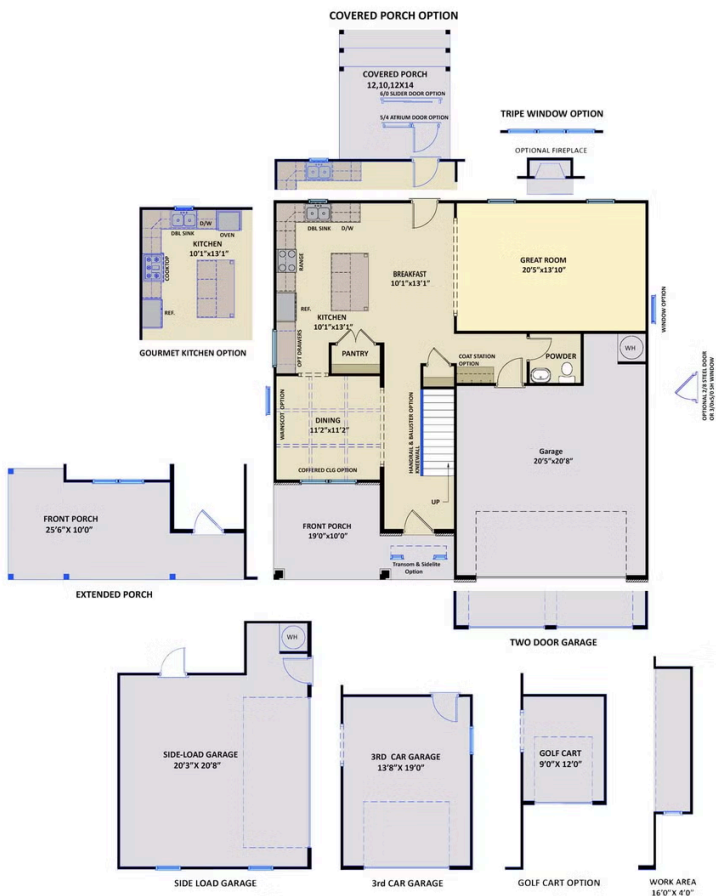
Prices, plans, dimensions, features, specifications, materials, and availability of homes or communities are subject to change without notice or obligation. Illustrations are artists depictions only and may differ from completed improvements. All prices subject to change without notice. Please contact your sales associate before writing an offer.



ARCHIVED 8/18/2023

## The Brunswick CC2355

### FIRST FLOOR



### SECOND FLOOR

