



61 Wildlife Parkway
Clayton, NC 27527
GORDON PARK - BRUNSWICK

CONTACT OUR NEW HOME SPECIALISTS

MAGGIE & JESSICA

Call Us @ 910-405-8311

info@cavinessandcates.com



Priced

\$399,900

Elevation K

2,355 Sq Ft

2.0 Story

4 Beds

2.5 Baths

2 Car Garage

Primary Bedroom: Up

About 61 Wildlife Parkway

Eat-in kitchen with large island, walk-in pantry, and window over kitchen sink with views to the backyard; Stainless steel appliance package.

Covered porch.

Great room with optional gas log fireplace with decorative mantle and granite surround.

Elegant formal dining room with stunning coffered ceiling and wainscoting detail.

Half bath with pedestal sink and oval mirror.

Second floor primary suite features 2 walk-in closets, dual sinks, garden soaking tub and separate shower, and private water closet.

[...Read More Online](#)

About The Community.

Located at Glen Laurel and Powhatan Road in the sought-after town of Clayton! This community features sidewalks and close proximity to top rated schools! Clayton is home to multiple family-friendly parks and recreation sites, 3 golf-courses, greenways/walking trails, a must-see sculpture trail filled with amazing local art, and a huge community center that boasts an indoor walking track, gymnasium, fitness center, art & pottery classroom...plus a spectacular community garden with a greenhouse! Gordon Park is within 1.5 miles to retail, restaurants and major highways make it easy to get to RDU Airport or RTP.

[...Read More Online](#)

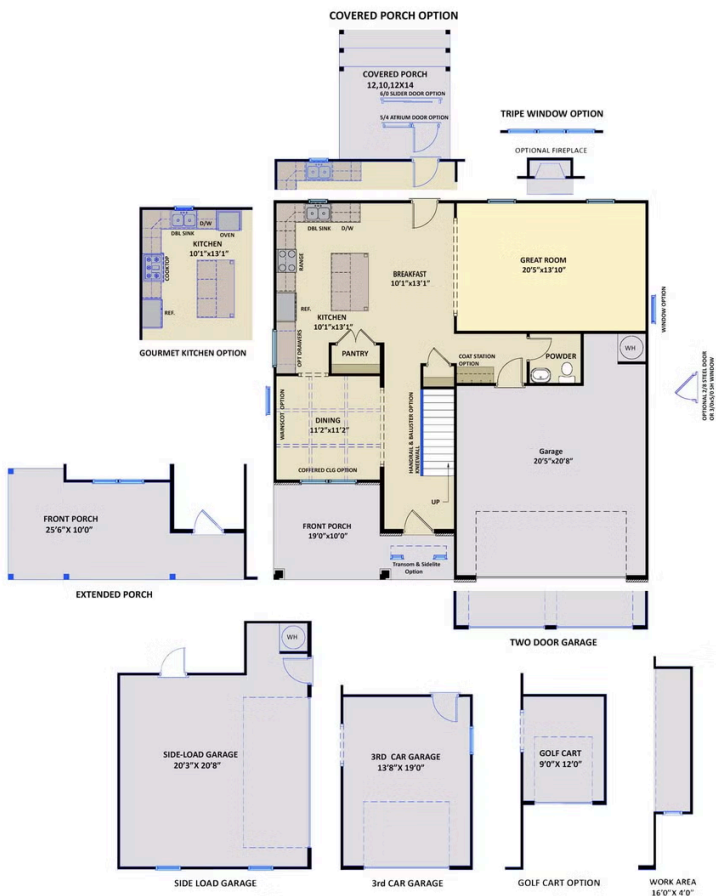
Prices, plans, dimensions, features, specifications, materials, and availability of homes or communities are subject to change without notice or obligation. Illustrations are artists depictions only and may differ from completed improvements. All prices subject to change without notice. Please contact your sales associate before writing an offer.



ARCHIVED 8/18/2023

The Brunswick CC2355

FIRST FLOOR



SECOND FLOOR

