



Elevation E - ARCHIVED 3/8/2022

2,972 Sq Ft

2.0 Story

5 Beds

3.5 Baths

2 Car Garage

Primary Bedroom: Down

About 69 Kingsly Drive

- Great Room with gas log fireplace
- Covered porch creates a perfect outdoor space
- Spacious kitchen features stainless steel microwave, dishwasher, and gas cooktop range, satin nickel finishes, with breakfast area, pantry, island overlooking great room, and window over kitchen sink with views to the backyard!
- Elegant formal dining room
- Half bath with pedestal sink and oval mirror

...Read More Online

About The Community.

Located at Glen Laurel and Powhatan Road in the sought-after town of Clayton! This community features sidewalks and close proximity to top rated schools! Clayton is home to multiple family-friendly parks and recreation sites, 3 golf-courses, greenways/walking trails, a must-see sculpture trail filled with amazing local art, and a huge community center that boasts an indoor walking track, gymnasium, fitness center, art & pottery classroom...plus a spectacular community garden with a greenhouse! Gordon Park is within 1.5 miles to retail, restaurants and major highways make it easy to get to RDU Airport or RTP.

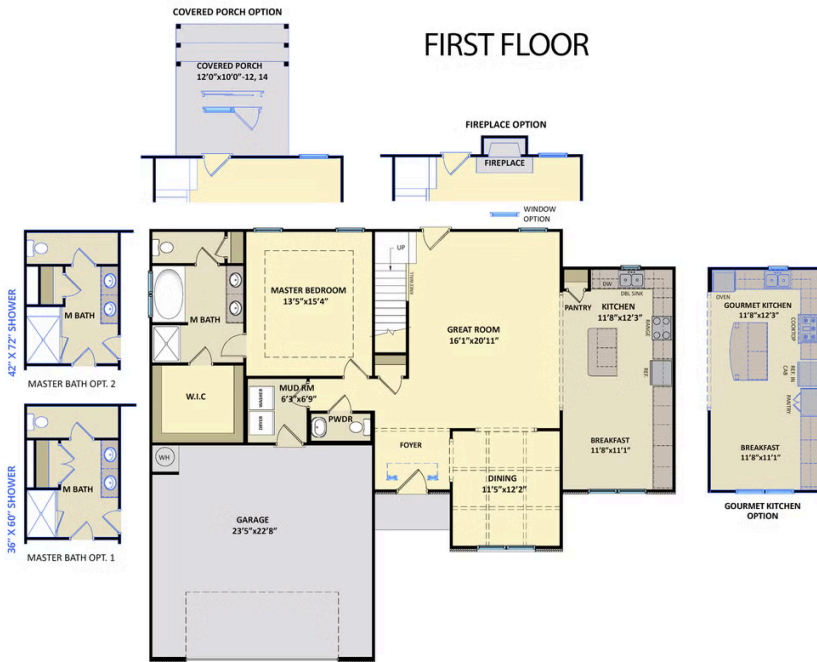
...Read More Online

Prices, plans, dimensions, features, specifications, materials, and availability of homes or communities are subject to change without notice or obligation. Illustrations are artists depictions only and may differ from completed improvements. All prices subject to change without notice. Please contact your sales associate before writing an offer.

ARCHIVED 03/8/2022

The Oakwinds
CC2964

FIRST FLOOR



SECOND FLOOR

