



83 Wildlife Parkway  
Clayton, NC 27527

**GORDON PARK - BAILEY**

CONTACT OUR NEW HOME SPECIALISTS

**MAGGIE & JESSICA**

Call Us @ 910-405-8311

info@cavinessandcates.com



**Priced**

**\$394,900**

Elevation K

2,424 Sq Ft

2.5 Story

4 Beds

2.5 Baths

2 Car Garage

Primary Bedroom: Up

## About 83 Wildlife Parkway

- Great room with gas log fireplace with decorative mantle and granite surround in "Absolute Black".
- Kitchen features island, granite countertops in "New Caledonia", subway tile backsplash in "Arctic White" set in a brick pattern, Seattle "Snow" shaker cabinets, pantry, dining area, and extended breakfast nook option; Stainless steel microwave, dishwasher, and smooth top range.
- Covered porch accessible through the dining area.
- Half bath with pedestal sink and tile flooring.

...Read More Online

## About The Community.

Located at Glen Laurel and Powhatan Road in the sought-after town of Clayton! This community features sidewalks and close proximity to top rated schools! Clayton is home to multiple family-friendly parks and recreation sites, 3 golf-courses, greenways/walking trails, a must-see sculpture trail filled with amazing local art, and a huge community center that boasts an indoor walking track, gymnasium, fitness center, art & pottery classroom...plus a spectacular community garden with a greenhouse! Gordon Park is within 1.5 miles to retail, restaurants and major highways make it easy to get to RDU Airport or RTP.

...Read More Online

Prices, plans, dimensions, features, specifications, materials, and availability of homes or communities are subject to change without notice or obligation. Illustrations are artists depictions only and may differ from completed improvements. All prices subject to change without notice. Please contact your sales associate before writing an offer.



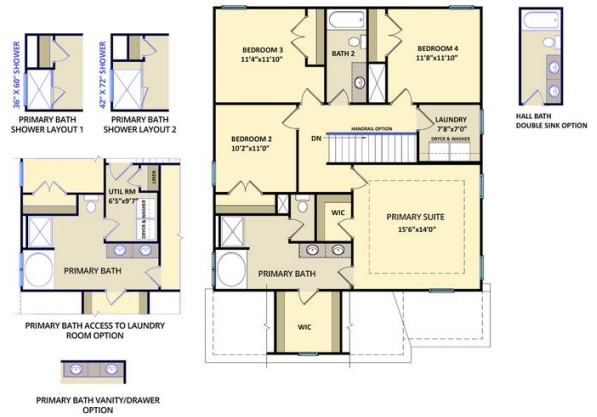
ARCHIVED 11/07/2023

**The Bailey**  
CC2136

**FIRST FLOOR**



**SECOND FLOOR**



**SECOND FLOOR WITH BONUS ROOM**

