



97 Wildlife Parkway  
Clayton, NC 27527  
**GORDON PARK - DRAYTON**

CONTACT OUR NEW HOME SPECIALISTS

**MAGGIE & JESSICA**

Call Us @ 910-405-8311

info@cavinessandcates.com



**Priced**

**\$419,900**

Elevation F - ARCHIVED 3/29/23

2,325 Sq Ft

2.0 Story

4 Beds

2.5 Baths

2 Car Garage

Primary Bedroom: Up

## About 97 Wildlife Parkway

- Great room with gas fireplace with decorative mantle and granite surround in "Absolute Black".
- Kitchen open to breakfast area and great room with island, Seattle "Snow" shaker cabinets, granite countertops in "Azul Platino", subway tile backsplash in "Desert Grey" set in a brick pattern, and corner pantry; Stainless steel microwave, dishwasher and smooth top range.
- First floor with formal dining room painted in Sherwin Williams "Web Gray" with wainscoting detail

...Read More Online

## About The Community.

Located at Glen Laurel and Powhatan Road in the sought-after town of Clayton! This community features sidewalks and close proximity to top rated schools! Clayton is home to multiple family-friendly parks and recreation sites, 3 golf-courses, greenways/walking trails, a must-see sculpture trail filled with amazing local art, and a huge community center that boasts an indoor walking track, gymnasium, fitness center, art & pottery classroom...plus a spectacular community garden with a greenhouse! Gordon Park is within 1.5 miles to retail, restaurants and major highways make it easy to get to RDU Airport or RTP.

...Read More Online

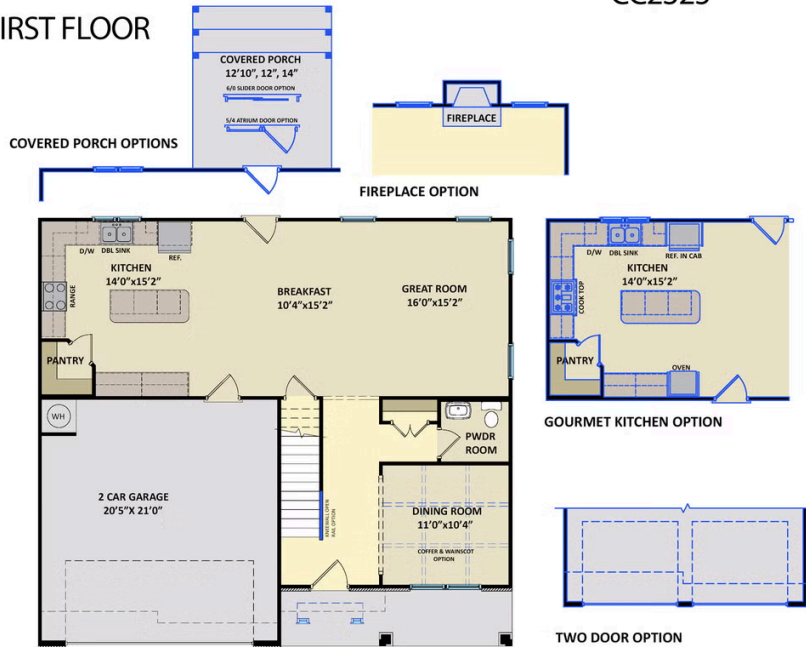
Prices, plans, dimensions, features, specifications, materials, and availability of homes or communities are subject to change without notice or obligation. Illustrations are artists depictions only and may differ from completed improvements. All prices subject to change without notice. Please contact your sales associate before writing an offer.



ARCHIVED 8/22/2023

**The Drayton**  
CC2325

**FIRST FLOOR**



**SECOND FLOOR**

