



120 Hanover Court
Clayton, NC 27527

THE COTTAGES AT WILSON'S MILLS - BAILEY

CONTACT OUR NEW HOME SPECIALISTS

MAGGIE & JESSICA

Call Us @ 910-405-8311

info@cavinessandcates.com



Priced

\$375,000

Elevation C

2,184 Sq Ft

2.0 Story

4 Beds

2.5 Baths

2 Car Garage

Primary Bedroom: Up

About 120 Hanover Court

- Great room features a gas log fireplace with a decorative mantle and granite surround in "Absolute Black".
- Open kitchen with island and extended breakfast area, Seattle "Snow" shaker, granite countertops in "Luna Pearl", subway tile backsplash in "Desert Gray" set in brick pattern; Stainless steel microwave, dishwasher, and smooth top range.
- Covered porch accessible through the breakfast/dining area.
- Powder room with pedestal sink and oval mirror.

...Read More Online

About The Community.

The Cottages at Wilson's Mills is a new community located near the town of Wilson's Mills, NC. Wilson's Mills is a growing area nestled between the towns of Clayton and Selma and is a short commute to the Garner and RTP areas. It is home to local businesses, restaurants and events such as White Swan BBQ, Double Barley Brewing, Community Parks & Rec youth rugby and the annual Pumpkin Festival! The nearby Johnston Community College offers a wide variety of lectures, concerts and exhibits, including the very popular Country Music Showcase! The town is a short drive from Johnston Health, a modern full service facility that is rated in the top 100 in the nation.

...Read More Online

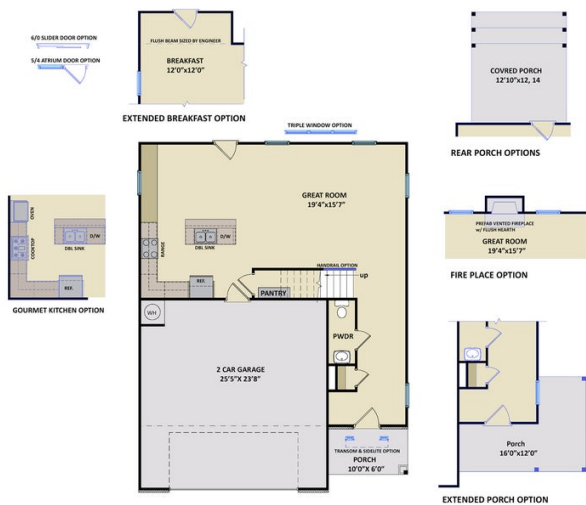
Prices, plans, dimensions, features, specifications, materials, and availability of homes or communities are subject to change without notice or obligation. Illustrations are artists depictions only and may differ from completed improvements. All prices subject to change without notice. Please contact your sales associate before writing an offer.



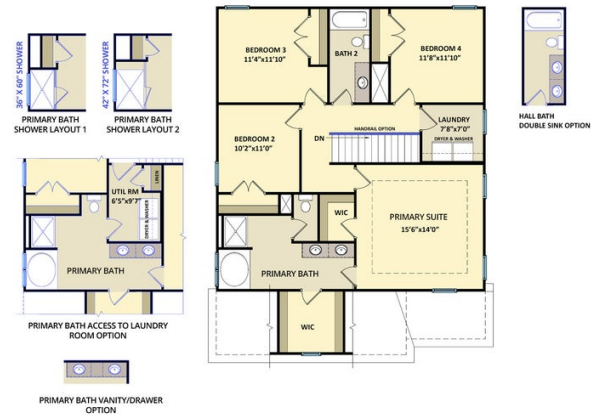
ARCHIVED 11/07/2023

The Bailey CC2136

FIRST FLOOR



SECOND FLOOR



SECOND FLOOR WITH BONUS ROOM

