



140 Hanover Court  
Clayton, NC 27527

**THE COTTAGES AT WILSON'S MILLS -  
SPRINGFIELD**

CONTACT OUR NEW HOME SPECIALISTS

**MAGGIE & JESSICA**

Call Us @ 910-405-8311

info@cavinessandcates.com



**Priced**

**\$384,900**

Elevation K

1,884 Sq Ft

2.0 Story

4 Beds

2.5 Baths

2 Car Garage

Master Bedroom: Up

## About 140 Hanover Court

This home will be available for move-in in 2022! Beautiful water views behind home!

- This home features a great room with a corner gas log fireplace with decorative mantle and granite surround in "Absolute Black".
- Covered porch creates the perfect outdoor space and is easily accessible through the great room.
- Kitchen features granite countertops in "New Caledonia", "Arctic White" subway tile backsplash set in brick pattern, Seattle "Snow" shaker cabinets, corner pantry, and sink overlooking the great room; Stainless steel microwave, dishwasher, and smooth top range.

...Read More Online

## About The Community.

The Cottages at Wilson's Mills is a new community located near the town of Wilson's Mills, NC. Wilson's Mills is a growing area nestled between the towns of Clayton and Selma and is a short commute to the Garner and RTP areas. It is home to local businesses, restaurants and events such as White Swan BBQ, Double Barley Brewing, Community Parks & Rec youth rugby and the annual Pumpkin Festival! The nearby Johnston Community College offers a wide variety of lectures, concerts and exhibits, including the very popular Country Music Showcase! The town is a short drive from Johnston Health, a modern full service facility that is rated in the top 100 in the nation.

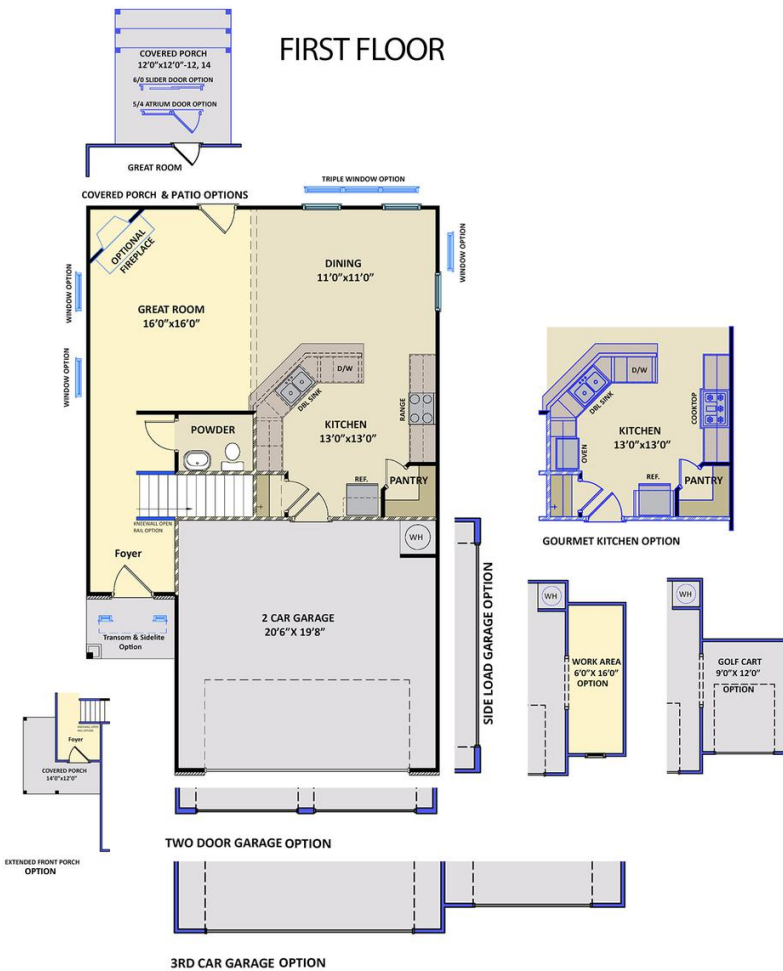
...Read More Online

Prices, plans, dimensions, features, specifications, materials, and availability of homes or communities are subject to change without notice or obligation. Illustrations are artists depictions only and may differ from completed improvements. All prices subject to change without notice. Please contact your sales associate before writing an offer.



## The Springfield CC1884

### FIRST FLOOR



### SECOND FLOOR

