



170 Hanover Court
Clayton, NC 27527

**THE COTTAGES AT WILSON'S MILLS -
CLAYTON**

CONTACT OUR NEW HOME SPECIALISTS

MAGGIE & JESSICA

Call Us @ 910-405-8311

info@cavinessandcates.com



Priced

\$383,992

ARCHIVED 07/07/2022 - Elevation D

2,560 Sq Ft

2.0 Story

4 Beds

3.5 Baths

2 Car Garage

Primary Bedroom: Down

About 170 Hanover Court

- Master suite on first floor with tray ceiling, his and hers sinks, drawer stack vanity, private water closet, walk-in closet, garden tub and separate shower.
- Great room with gas fireplace
- Covered porch off of great room
- Formal Dining Room with coffered ceiling and wainscoting detail
- Kitchen open to great room with breakfast area, island with sink, and pantry
- Mudroom in garage entry with bench and coat station, coat closet, and powder room

...Read More Online

About The Community.

The Cottages at Wilson's Mills is a new community located near the town of Wilson's Mills, NC. Wilson's Mills is a growing area nestled between the towns of Clayton and Selma and is a short commute to the Garner and RTP areas. It is home to local businesses, restaurants and events such as White Swan BBQ, Double Barley Brewing, Community Parks & Rec youth rugby and the annual Pumpkin Festival! The nearby Johnston Community College offers a wide variety of lectures, concerts and exhibits, including the very popular Country Music Showcase! The town is a short drive from Johnston Health, a modern full service facility that is rated in the top 100 in the nation.

...Read More Online

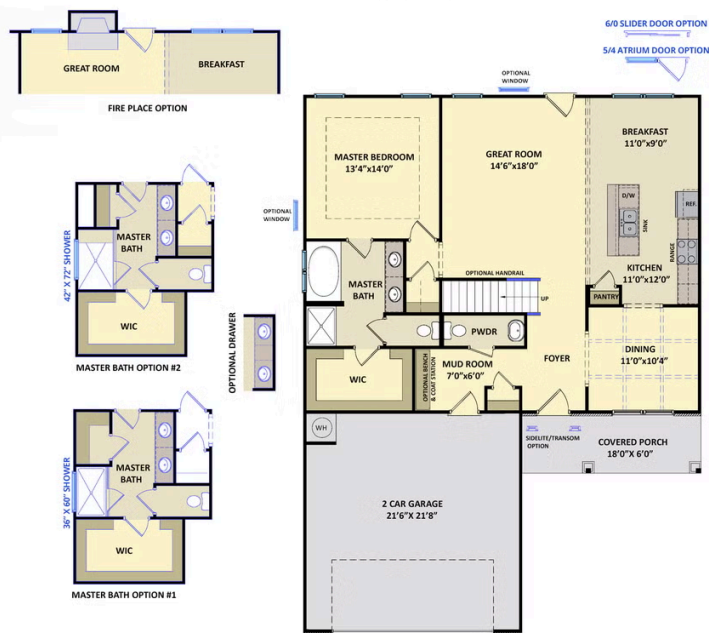
Prices, plans, dimensions, features, specifications, materials, and availability of homes or communities are subject to change without notice or obligation. Illustrations are artists depictions only and may differ from completed improvements. All prices subject to change without notice. Please contact your sales associate before writing an offer.



ARCHIVED 07/07/2022

The Clayton CC2560

FIRST FLOOR



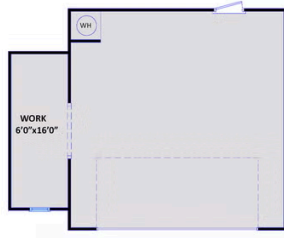
SECOND FLOOR



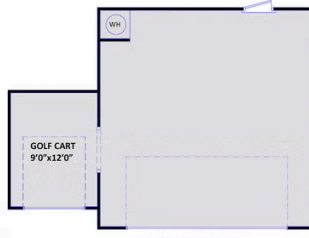
FLEX ROOM OPTION



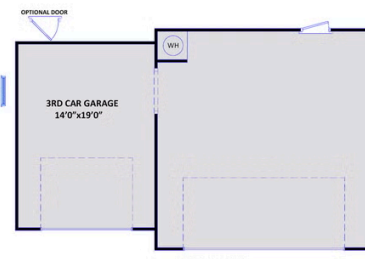
FLEX ROOM OPTION
with GOURMET KITCHEN



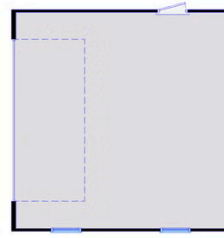
WORK AREA



GOLF CART GARAGE



3RD CAR GARAGE



SIDE LOAD GARAGE