



54 W. Cannalily Lane
Clayton, NC 27520

**THE ESTATES AT WINSTON POINTE -
ROANOKE**

CONTACT OUR NEW HOME SPECIALISTS

MAGGIE & JESSICA

Call Us @ 910-405-8311

info@cavinessandcates.com



Priced

\$612,000

Elevation B

3,156 Sq Ft

2.0 Story

5 Beds

3.0 Baths

2 Car Garage

Primary Bedroom: Up

About 54 W. Cannalily Lane

- Great Room with gas log fireplace with decorative mantle and granite surround in "Absolute Black", and built-in shelving.
- Elegant formal dining room painted in Sherwin Williams "Outerspace" with stunning coffered ceiling and wainscoting detail.
- Two-piece crown molding throughout main living space
- Kitchen features quartz countertops in "New Willow White", natural stone and marble backsplash, Seattle Snow shaker cabinets, sink overlooking the great room, breakfast area, spacious butler's

...Read More Online

About The Community.

The town of Clayton, NC is one of the fastest-growing communities in the Triangle, but you'd never guess it from the quaint, small-town charm that abounds. From its quaint Downtown scene—complete with local shops and restaurants, a weekend farmers market, a library, and a performing arts center—to its beautiful local parks, trails, and golf courses, Clayton has something for everyone.

At Winston Pointe, you're just minutes from all the local favorites of Clayton! Tastings at Wine on Main, karaoke nights at Flipside Cafe, canine socials at the Dog Park, scenic walks along the Clayton River Walk... they're all just minutes outside your front door.

...Read More Online

Prices, plans, dimensions, features, specifications, materials, and availability of homes or communities are subject to change without notice or obligation. Illustrations are artists depictions only and may differ from completed improvements. All prices subject to change without notice. Please contact your sales associate before writing an offer.



ARCHIVED 8/16/2023

The Roanoke

CC3156

FIRST FLOOR

SECOND FLOOR

REAR COVERED PORCH OPTION



COVERED PORCH
12'0" x 12'0" - 14', 16'

OPTIONAL 6/0 SLIDING DOOR

OPTIONAL 5/4 ATRIUM DOOR



GOURMET KITCHEN
13'5" x 12'6"

GOURMET KITCHEN OPTION

WINDOW
OPTION

WINDOW
OPTION

WINDOW
OPTION

WINDOW
OPTION

WINDOW
OPTION

WINDOW
OPTION

WINDOW
OPTION

WINDOW
OPTION

WINDOW
OPTION

WINDOW
OPTION

WINDOW
OPTION

WINDOW
OPTION

WINDOW
OPTION

WINDOW
OPTION

WINDOW
OPTION

WINDOW
OPTION

WINDOW
OPTION

WINDOW
OPTION

WINDOW
OPTION

WINDOW
OPTION

WINDOW
OPTION

WINDOW
OPTION

WINDOW
OPTION

WINDOW
OPTION

WINDOW
OPTION

WINDOW
OPTION

WINDOW
OPTION

WINDOW
OPTION

WINDOW
OPTION

WINDOW
OPTION

WINDOW
OPTION

WINDOW
OPTION

WINDOW
OPTION

WINDOW
OPTION

WINDOW
OPTION

WINDOW
OPTION

WINDOW
OPTION

WINDOW
OPTION

WINDOW
OPTION

WINDOW
OPTION

WINDOW
OPTION

WINDOW
OPTION

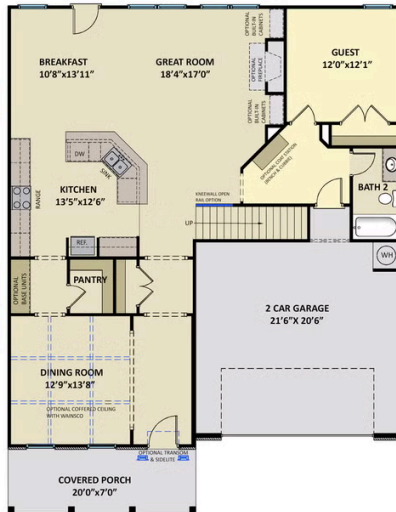
WINDOW
OPTION

WINDOW
OPTION

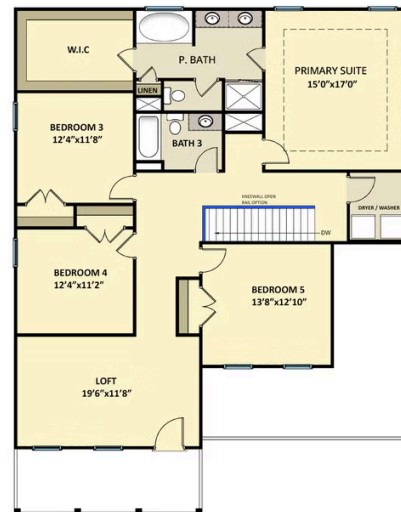
WINDOW
OPTION

WINDOW
OPTION

WINDOW
OPTION



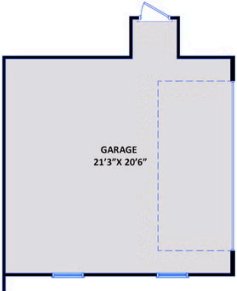
OPTIONAL
STEEL DOOR



PRIMARY BATH LAYOUT
OPTION 1



PRIMARY BATH LAYOUT
OPTION 2



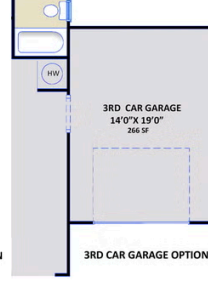
SIDE LOAD GARAGE OPTION



GOLF CART OPTION



WORK AREA OPTION



3RD CAR GARAGE OPTION



TWO DOOR GARAGE